
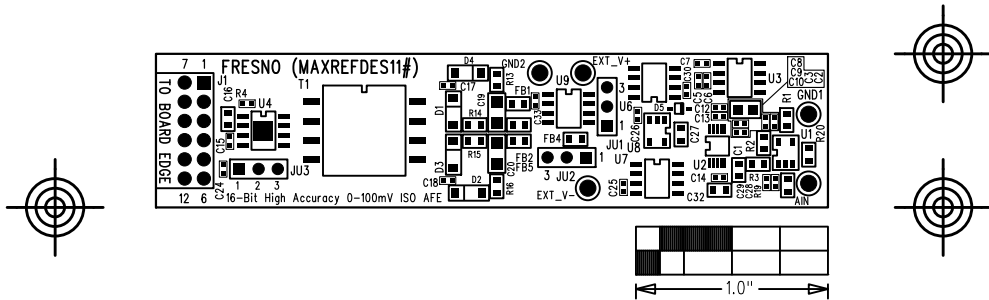

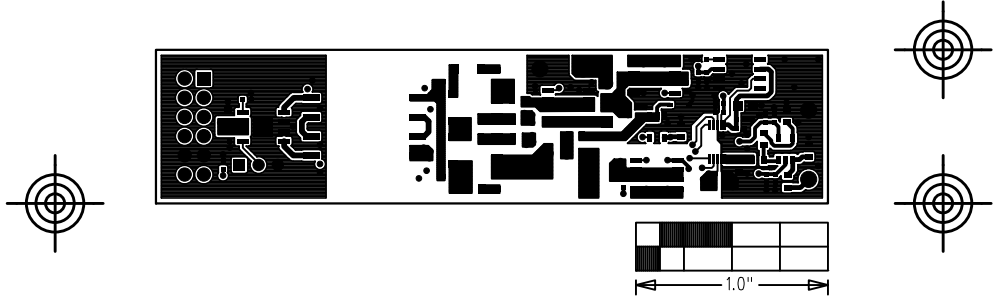



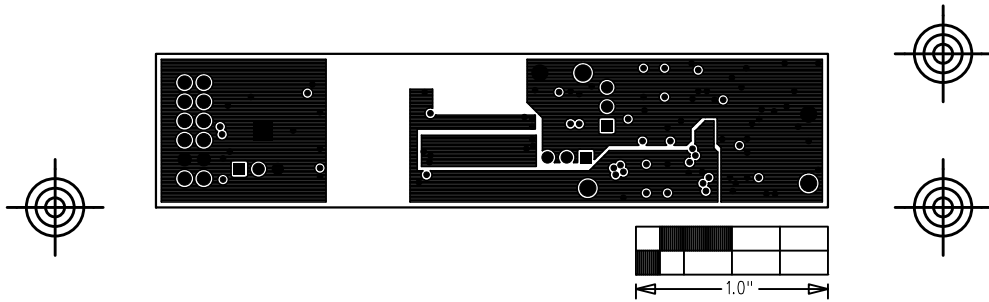
FRESNO (MAXREFDES11#)	
16-Bit High Accuracy 0-100mV ISO AFE	
P/N: EPCBREFDES11	REV A
	
LAYER TOP SILKSCREEN	
DATE:	ALL UNITS ARE IN 0.001"




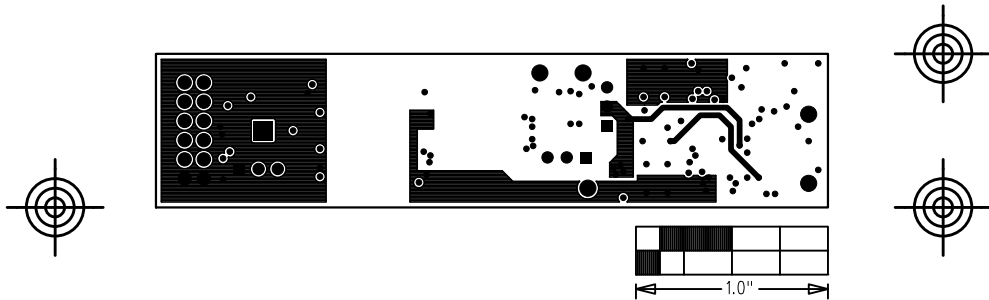
FRESNO (MAXREFDES11#)	
16-Bit High Accuracy 0-100mV ISO AFE	
P/N: EPCBREFDES11	REV A
	
LAYER	COMPONENT SIDE
DATE:	ALL UNITS ARE IN 0.001"




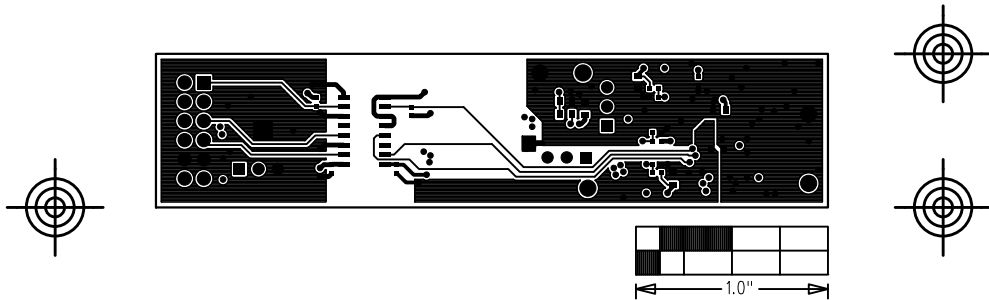
FRESNO (MAXREFDES11#)	
16-Bit High Accuracy 0-100mV ISO AFE	
P/N: EPCBREFDES11	REV A
	
LAYER LAYER 2 GND	
DATE:	ALL UNITS ARE IN 0.001"




FRESNO (MAXREFDES11#)	
16-Bit High Accuracy 0-100mV ISO AFE	
P/N: EPCBREFDES11	REV A
	
LAYER LAYER 3 PWR	
DATE:	ALL UNITS ARE IN 0.001"



FRESNO (MAXREFDES11#)	
16-Bit High Accuracy 0-100mV ISO AFE	
P/N: EPCBREFDES11	REV A
	
LAYER	SOLDER SIDE
DATE:	ALL UNITS ARE IN 0.001"



FRESNO (MAXREFDES11#)	
16-Bit High Accuracy 0-100mV ISO AFE	
P/N: EPCBREFDES11	REV A
	
LAYER BOTTOM SILKSCREEN	
DATE:	ALL UNITS ARE IN 0.001"

