

6

5

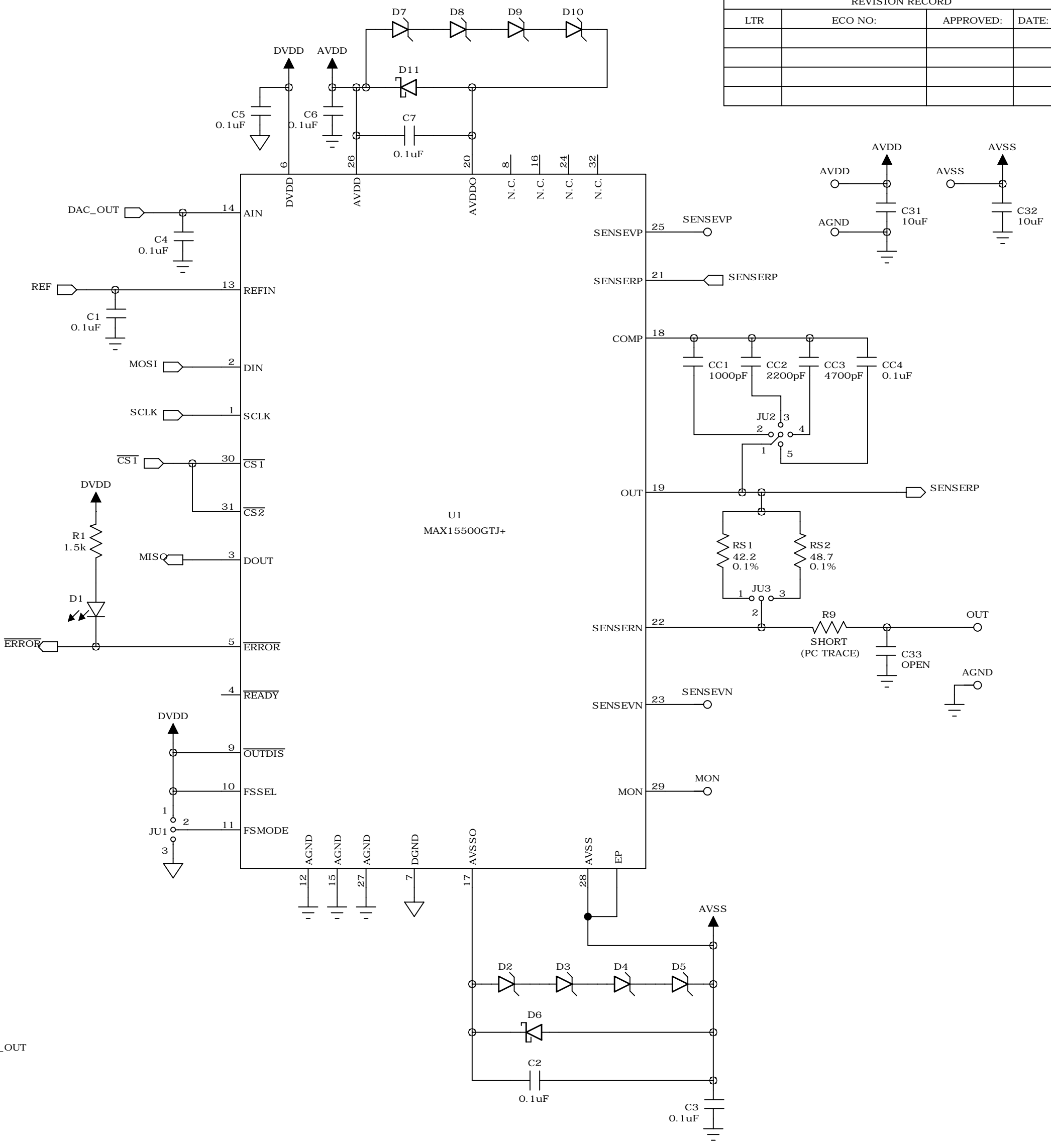
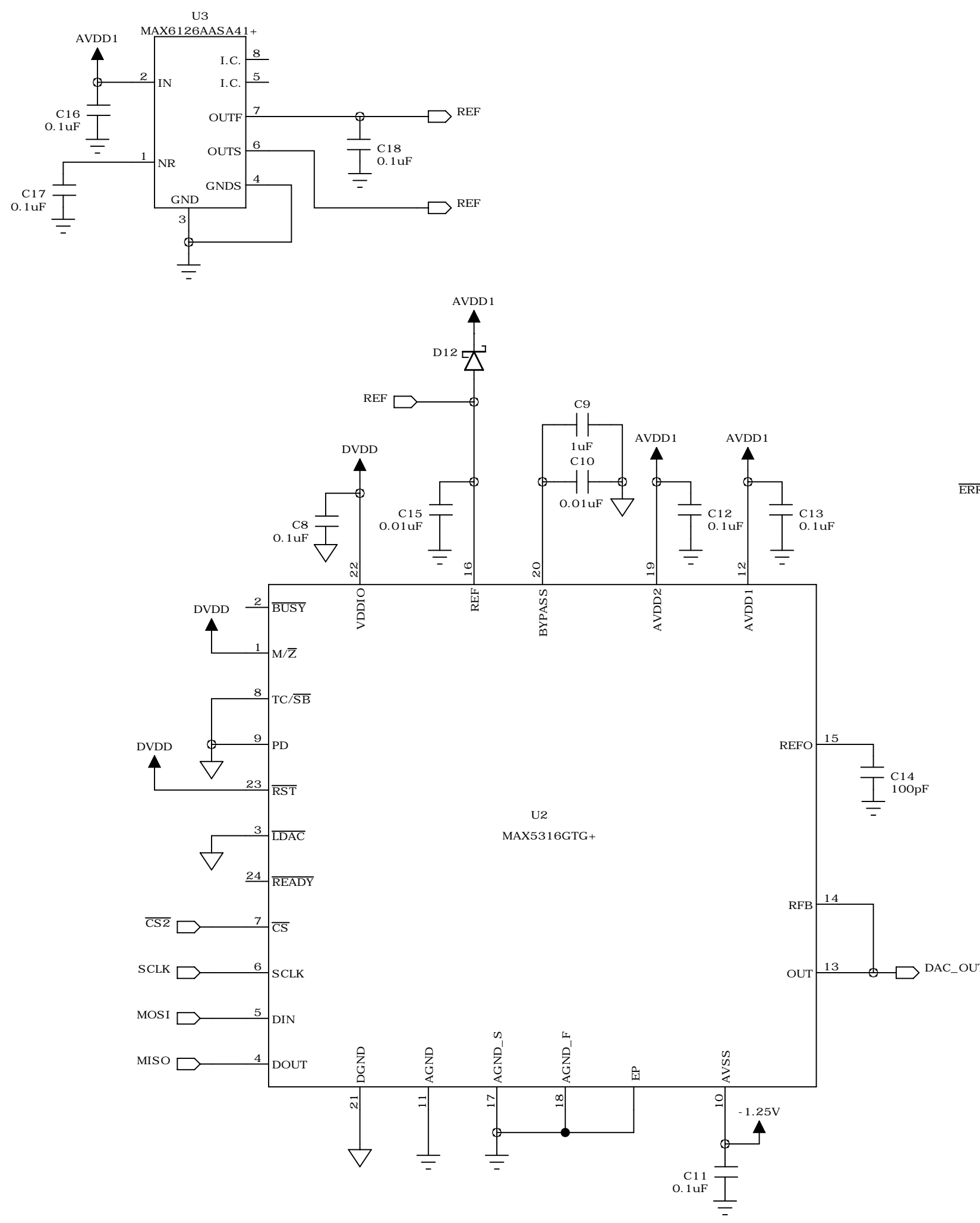
4


3

2

1

REVISION RECORD			
LTR	ECO NO:	APPROVED:	DATE:



COMPANY:  **maxim integrated™**

TITLE: **CARMEL (MAXREFDES 18#)**
High Accuracy Analog Current/Voltage Output

DRAWN: MG/OL	DATED: 8/12/2013	CODE:	SIZE: C	PCB PART NO: EPCBREFDES 18	REV: A
CHECKED:	DATED:	SCALE:			SHEET 1 OF 2
QUALITY CONTROL:	DATED:				
RELEASED:	DATED:				

D

C

B

A

D

C

B

A

6

5

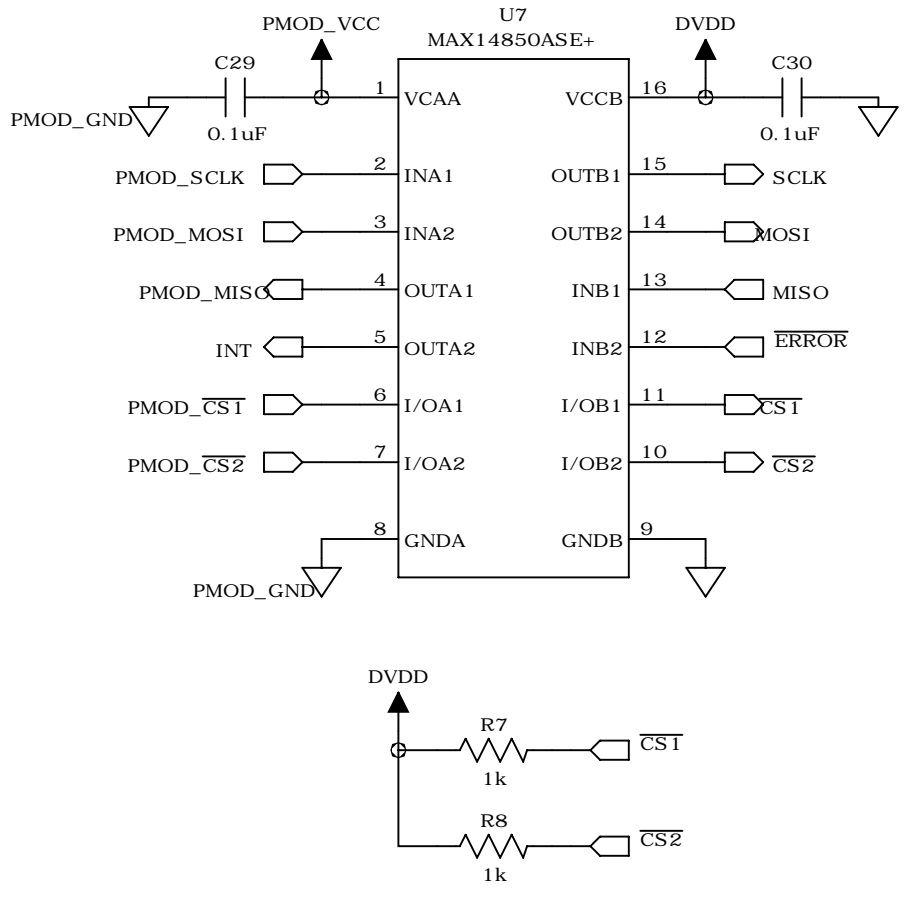
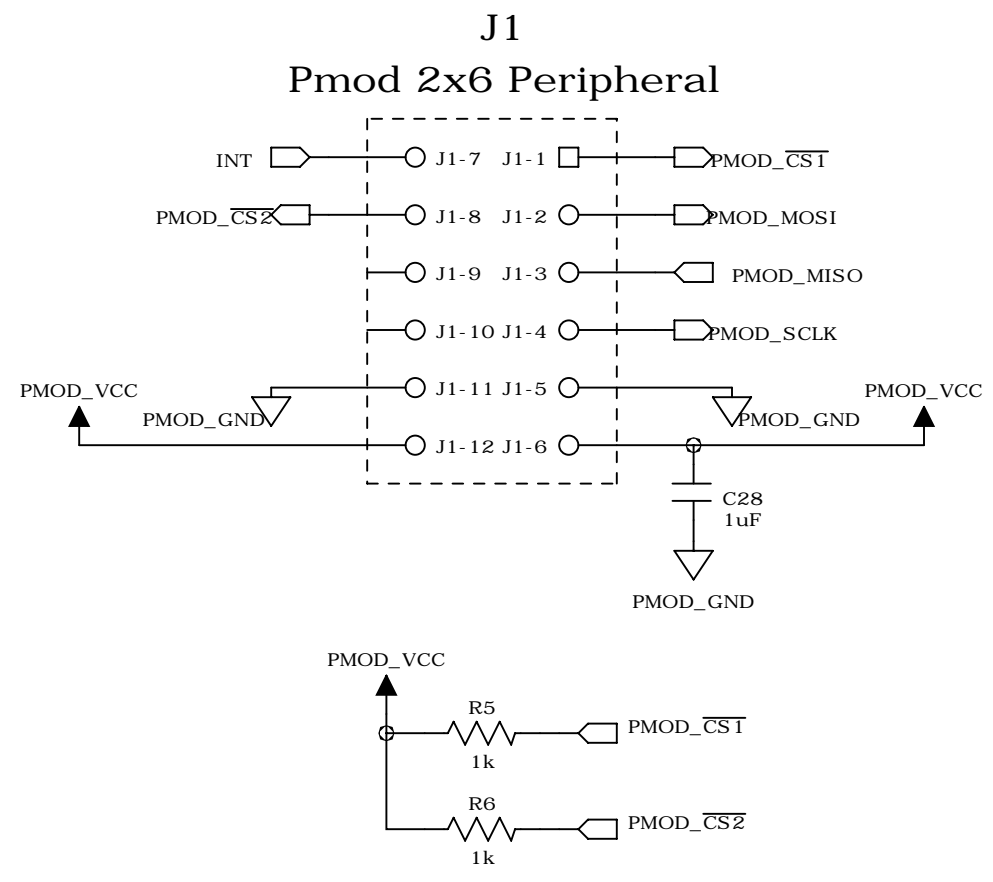
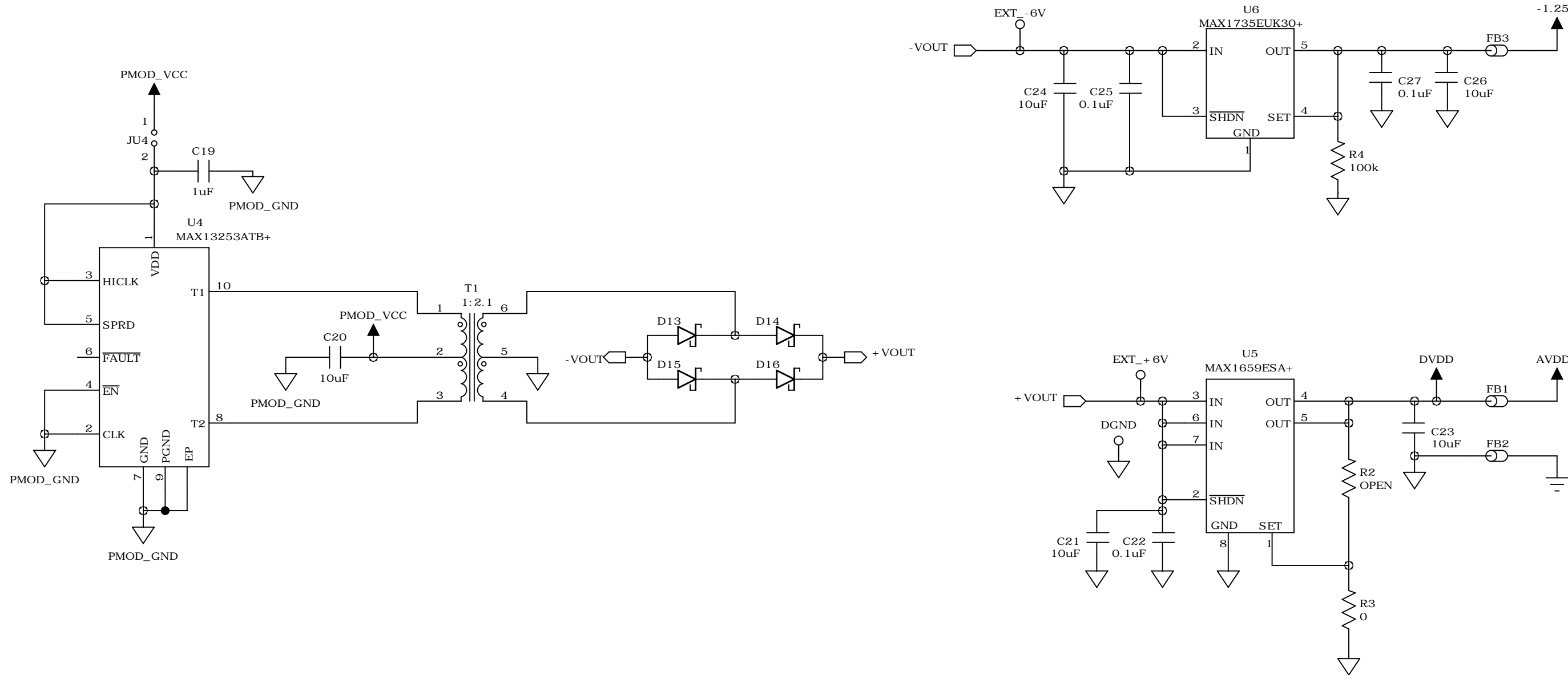
4

3

2

1

REVISION RECORD			
LTR	ECO NO:	APPROVED:	DATE:



TITLE: **CARMEL (MAXREFDES 18#)**
High Accuracy Analog Current/Voltage Output

PCB PART NUMBER: EPCBREFDES 18	REV: A
DRAWN: MG/OL	DATED: 8/12/2013
SHEET: 2 OF 2	