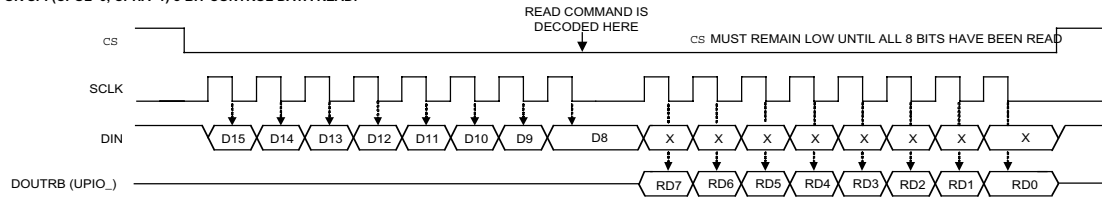
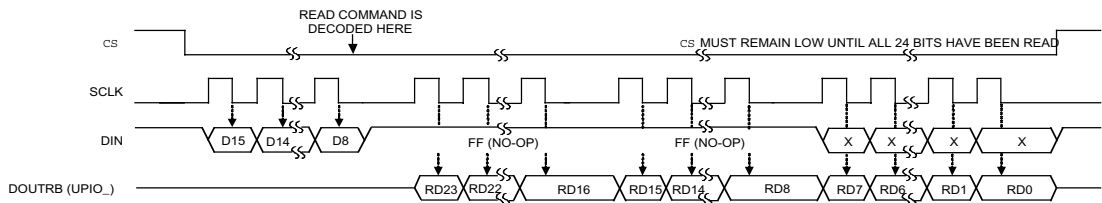


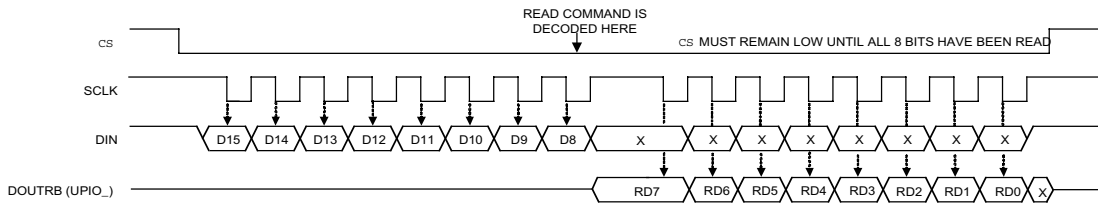
**DSP OR SPI (CPOL=0, CPHA=1) 8-BIT CONTROL DATA READ:**



**DSP OR SPI (CPOL=0, CPHA=1) 24-BIT DAC DATA READ:**



**DSP OR SPI (CPOL=1, CPHA=0) 8-BIT CONTROL DATA READ:**



**DSP OR SPI (CPOL=1, CPHA=0) 24-BIT DAC DATA READ:**

