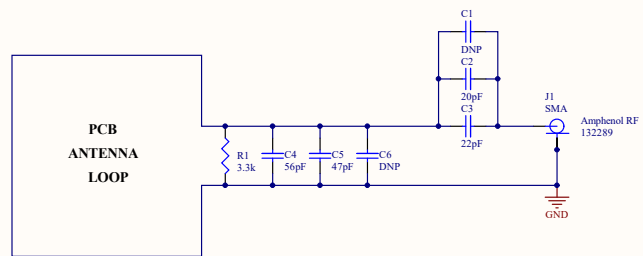
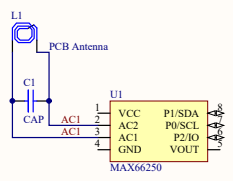


<p>All Builds</p> <p>MechSC1 MechSC2 MechSC3 MechSC4 MechSC5 MechSC6 MechSC7 MechSC8</p> <p>MechS01 MechS02 MechS03 MechS04 MechS05 MechS06 MechS07 MechS08</p> <p>MechBC1</p> <p>Stand Off Stand Off Stand Off Stand Off Stand Off Stand Off Stand Off Stand Off</p>		<p>Open Build only</p> <p>MechCBL2 uSB Cable</p> <p>PCBSA1</p> <p>Loop Antenna</p>	<p>Enclosure Build only</p> <p>MechLP1 LightPipe</p> <p>MechENC1 Enclosure Box</p> <p>MechSC9 MechSC10 MechCBL1 Cable</p> <p>MechSC11 MechSC12</p>	<p>Shunts needed for jumpers:</p> <p>MechSU1 Shunt MechSU2 Shunt MechSU3 Shunt MechSU4 Shunt</p> <p>MechSU9 Shunt MechSU10 Shunt MechSU11 Shunt MechSU12 Shunt</p> <p>MechSU5 Shunt MechSU6 Shunt MechSU7 Shunt MechSU8 Shunt</p> <p>MechSU13 Shunt MechSU14 Shunt MechSU15 Shunt MechSU16 Shunt</p>	<p>3.3V Jumper pin settings:</p> <p>JB2 = 1-2, 3-4, 5-6, 7-8, 9-10, 11-12, 15-16, 17-18, 19-20, 21-22</p> <p>5V Jumper pin settings:</p> <p>JB2 = 1-2, 3-4, 5-6, 7-8, 9-10, 11-12, 15-16, 17-18, 19-20, 21-22</p> <p>J3,J4,J5=1-2 (VCC3)</p> <p>J9=2-3</p> <p>JB1=PIN 1 ONLY</p> <p>JB3=1-2</p>
<p>MechSC1 MechSC2 MechSC3 MechSC4 MechSC5 MechSC6 MechSC7 MechSC8</p>		<p>MechSU1 MechSU2 MechSU3 MechSU4 MechSU5 MechSU6 MechSU7 MechSU8 MechSU9 MechSU10 MechSU11 MechSU12 MechSU13 MechSU14 MechSU15 MechSU16</p>		<p>Title</p> <p>EVALUATION KIT FOR MAX66301</p>	
<p>Size</p> <p>Tabloid</p>		<p>Number</p> <p>MAX66301-25XEVKIT#</p>		<p>Revision</p> <p>A</p>	
<p>Date: 5/24/2022</p> <p>File: C:\Users\jmax\MAX66301EVKitSchDoc</p>		<p>Sheet of</p> <p>1</p>		<p>Drawn By:</p> <p>MAXIM</p>	



Title			50 ohm 3.5 inch Loop Antenna		
Size	Number		Revision		A
Tabloid			Sheet of		
Date:	4/25/2022		Drawn By:		ADI
File:	C:\Users\350hm5\inchRingAntenna_Sch1				



Title		
Size	Number	Revision
Tabloid		
Date:	3/17/2022	Sheet of
File:	C:\Users\MAX66250\AntennaSOIC8.Sch	Drawn By: