
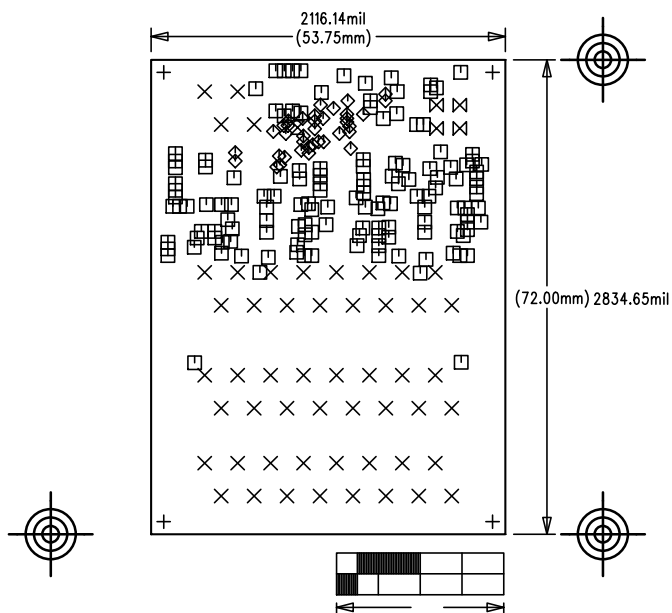


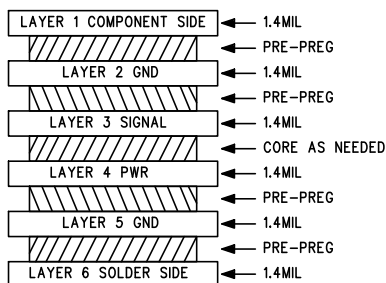
SAN FRANCISCO (MAXREFDES36#)	
IO Link 16 Channel HV Digital Input Device	
P/N: EPCBREFDES36	REV A
 maxim integrated™	
LAYER DRILL & MECHANICALS	
DATE:	ALL UNITS ARE IN 0.001"

NOTES: UNLESS OTHERWISE SPECIFIED

1. FABRICATE USING PROVIDED GERBER FILES PER LATEST REVISION OF IPC-A-600 UNLESS OTHERWISE NOTED.
2. MATERIAL: RoHS COMPLIANT FR-408 AND COMPATIBLE WITH LEAD-FREE SOLDERING PROCESS.
3. BOARD DIMENSIONS: 2.116"x2.835" (53.75mmx72.00mm) +/- 0.010". BOARD THICKNESS: 0.062"
4. LAYERS: 6.
5. MINIMUM TRACE/SPACING: 3MILS/3MILS.
6. COPPER CLAD FINISH: 1oz MINIMUM ON OUTER LAYERS AND 1oz ON INNER LAYERS.
7. SURFACE MOUNT PADS: 361.
8. SOLDERMASK: GREEN TAIYO PSR-4000. SOLDERMASK APERTURE TOLERANCE: +/-0.0005".
9. LEGENDS: WHITE, DOUBLE-SIDED, NON-CONDUCTIVE EPOXY INK OR EQUIVALENT. CLIPPED ALL LEGENDS FROM EXPOSED METAL.
10. PLATING: MUST BE LEAD FREE AND RoHS COMPLIANT.
11. FINISH: 3-8u" IMMERSION Au OVER 100u" Ni.
12. VENDOR LOGO & DATE CODE IN INK ON BOTTOM SIDE ONLY. DATE CODE FORMAT MUST BE YYWW ONLY.
13. THRU HOLES: 0.001" MIN.
14. TOLERANCES:
PLATED-THRU HOLES: +/-0.003"
PATTERN-TO-PATTERN: +/-0.005"
LEGEND TO LEGEND: +/-0.007"



SIZE	QTY	SYM	PLATED	TOL
95	4	+	NO	+/-3.0
45	52	X	YES	+/-3.0
15	140	□	YES	+/-3.0
5	37	◇	YES	+/-3.0
25	1	⊗	YES	+/-3.0
55	4	⊗	YES	+/-3.0



CROSS SECTION DETAIL