
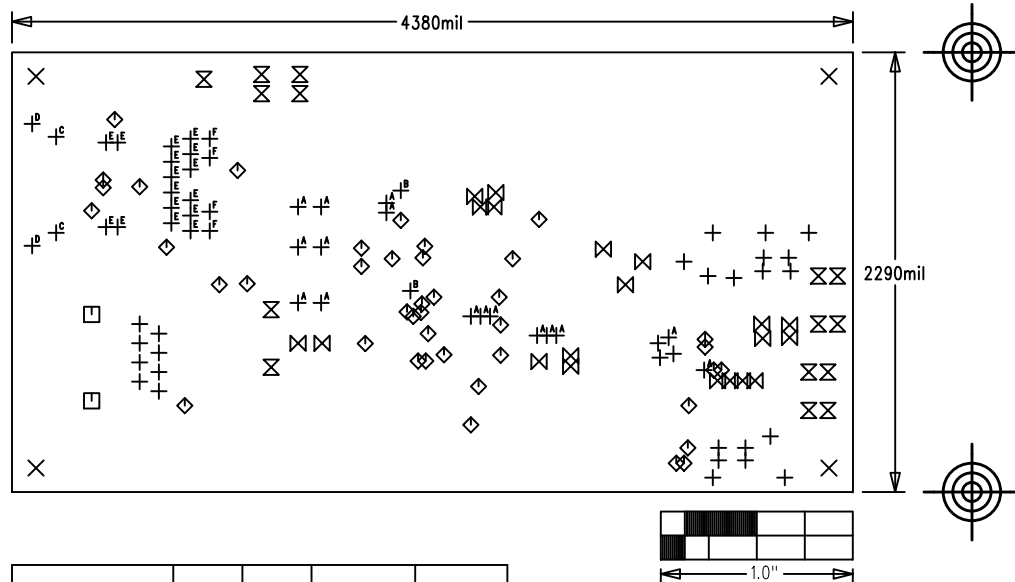


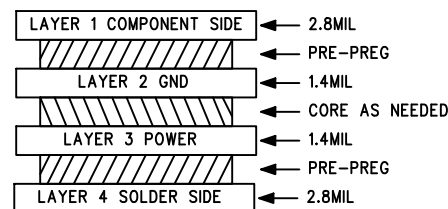
PASADENA (MAXREFDES31#)	
P/N: EPCBREFDES31	REV A
 maxim integrated™	
LAYER DRILL & MECHANICALS	
DATE:	ALL UNITS ARE IN 0.001"

NOTES: UNLESS OTHERWISE SPECIFIED

- FABRICATE USING PROVIDED GERBER FILES PER LATEST REVISION OF IPC-A-600 UNLESS OTHERWISE NOTED.
- MATERIAL: RoHS COMPLIANT FR-408 OR SIMILAR LAMINATE MATERIAL WITH $T_g \geq 170$ AND COMPATIBLE WITH LEAD-FREE SOLDERING PROCESS.
- BOARD DIMENSIONS: 4.380"X2.290" ± 0.010 ".
BOARD THICKNESS: 0.062"
- LAYERS: 4. SEE LAYER STACKUP CHART.
- MINIMUM TRACE/SPACING: 10 MILS/7 MILS.
- COPPER CLAD FINISH: 2oz MINIMUM ON OUTER LAYERS AND 1oz ON INNER LAYERS.
- SURFACE MOUNT PADS: 332.
- SOLDERMASK: GREEN LPI SMOBC.
- LEGENDS: WHITE. DOUBLE-SIDED. NON-CONDUCTIVE EPOXY INK OR EQUIVALENT.
CLIPPED ALL LEGENDS FROM EXPOSED METAL.
- PLATING: MUST BE LEAD FREE AND RoHS COMPLIANT.
- FINISH: VENDOR SHOULD USE THE MOST ECONOMICAL LEAD FREE AND RoHS COMPLIANT PROCESS AVAILABLE OR AS SPECIFIED IN PURCHASE ORDER.
APPROVED FINISH:
HASL LEAD-FREE
IMMERSION TIN
IMMERSION GOLD
- VENDOR LOGO & DATE CODE IN INK ON BOTTOM SIDE ONLY. DATE CODE FORMAT MUST BE YYWW ONLY.
- THRU HOLES: 0.001" MIN.
- TOLERANCES:
PLATED-THRU HOLES: ± 0.003 "
PATTERN-TO-PATTERN: ± 0.005 "
LEGEND TO LEGEND: ± 0.007 "
SOLDERMASK TO PATTERN: ± 0.005 ".



SIZE	QTY	SYM	PLATED	TOL
37	28	+	YES	± 3.0
125	4	X	YES	± 3.0
129.92	2	□	NO	± 3.0
15	41	◇	YES	± 3.0
40	15	⊗	YES	± 3.0
28	20	⊗	YES	± 3.0
25	16	+ ^A	YES	± 3.0
20	2	+ ^B	YES	± 3.0
128	2	+ ^C	YES	± 3.0
62	2	+ ^D	YES	± 3.0
35	16	+ ^E	YES	± 3.0
45	4	+ ^F	YES	± 3.0



CROSS SECTION DETAIL