
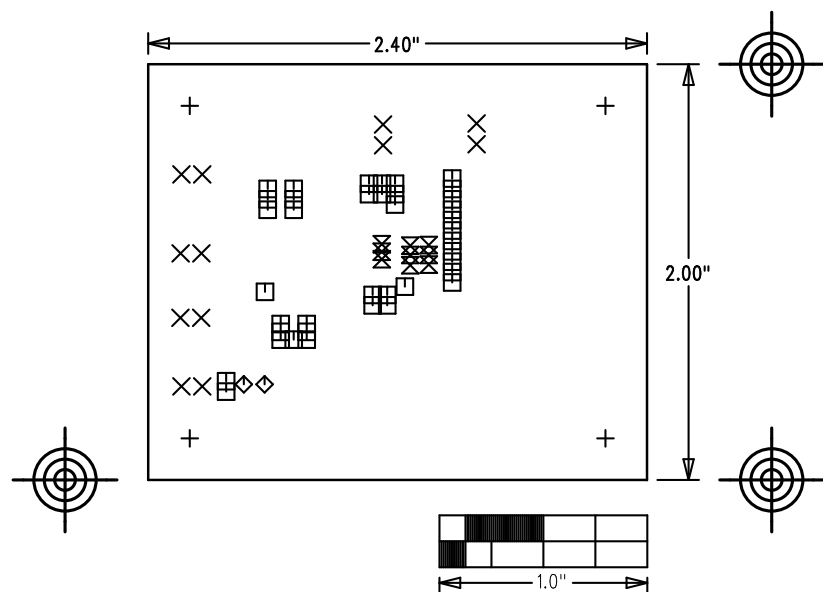


|   |                         |
|---|-------------------------|
| MAXM17515 EVKIT   |                         |
| P/N: EPCBM17515   | REV<br>B                |
|  |                         |
| LAYER DBMPCBMECHANICALS   |                         |
| DATE:   | ALL UNITS ARE IN 0.001" |

## NOTES: UNLESS OTHERWISE SPECIFIED

- FABRICATE USING PROVIDED GERBER FILES PER LATEST REVISION OF IPC-A-600 UNLESS OTHERWISE NOTED.
- MATERIAL: RoHS COMPLIANT FR-408 OR SIMILAR LAMINATE MATERIAL WITH  $T_g \geq 170$  AND COMPATIBLE WITH LEAD-FREE SOLDERING PROCESS.
- BOARD DIMENSIONS: 2.40"X2.00"  $\pm 0.010$ ".  
BOARD THICKNESS: 0.062"
- LAYERS: 4. SEE LAYER STACKUP CHART
- MINIMUM TRACE/SPACING: 10 MILS/8MILS.
- COPPER CLAD FINISH: 1oz MINIMUM ON ALL LAYERS.
- SURFACE MOUNT PADS: 49.
- SOLDERMASK: GREEN LPI SMOBC.
- LEGENDS: WHITE. DOUBLE-SIDED. NON-CONDUCTIVE EPOXY INK OR EQUIVALENT. CLIPPED ALL LEGENDS FROM EXPOSED METAL.
- PLATING: MUST BE LEAD FREE AND RoHS COMPLIANT.
- FINISH: VENDOR SHOULD USE THE MOST ECONOMICAL LEAD FREE AND RoHS COMPLIANT PROCESS AVAILABLE OR AS SPECIFIED IN PURCHASE ORDER.  
APPROVED FINISH:  
HASL LEAD-FREE  
IMMERSION TIN  
IMMERSION GOLD
- VENDOR LOGO & DATE CODE REQUIRED IN INK ON BOTTOM SIDE ONLY. DATE CODE FORMAT MUST BE YYWW ONLY
- THRU HOLES: 0.001" MIN.
- TOLERANCES:  
PLATED-THRU HOLES:  $\pm 0.003$ "  
PATTERN-TO-PATTERN:  $\pm 0.005$ "  
LEGEND TO LEGEND:  $\pm 0.007$ "  
SOLDERMASK TO PATTERN:  $\pm 0.005$ "



| SIZE | QTY | SYM | PLATED | TOL     |
|------|-----|-----|--------|---------|
| 125  | 4   | +   | YES    | $\pm 3$ |
| 40   | 12  | X   | YES    | $\pm 3$ |
| 8    | 39  | □   | YES    | $\pm 3$ |
| 37   | 2   | ◇   | YES    | $\pm 3$ |
| 25   | 9   | ⊠   | YES    | $\pm 3$ |

|                    |           |
|--------------------|-----------|
| LAYER 1 TOP        | 1.4MIL    |
| PRE-PREG           | AS NEEDED |
| LAYER 2 PGND / VCC | 1.4MIL    |
| CORE               | AS NEEDED |
| LAYER 3 PGND       | 1.4MIL    |
| PRE-PREG           | AS NEEDED |
| LAYER 4 BOTTOM     | 1.4MIL    |

ALL DIMENSION IN MIL (0.001 INCH) UNLESS OTHERWISE SPECIFIED.