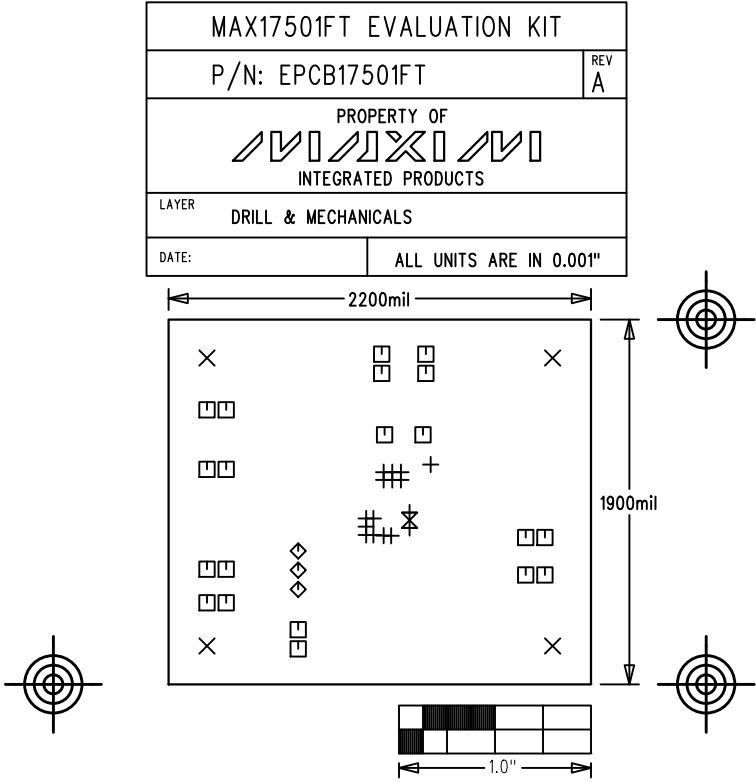


NOTES: UNLESS OTHERWISE SPECIFIED

- 1. FABRICATE USING PROVIDED GERBER FILES PER LATEST REVISION OF IPC-A-600 UNLESS OTHERWISE NOTED.
- 2. MATERIAL: RoHS COMPLIANT FR-408 OR SIMILAR LAMINATE MATERIAL WITH $T_g \geq 170$ AND COMPATIBLE WITH LEAD-FREE SOLDERING PROCESS.
- 3. BOARD DIMENSIONS: 2.20"x1.90" +/- 0.010".
BOARD THICKNESS: 0.062"
- 4. LAYERS: 2.
- 5. MINIMUM TRACE/SPACING: 10 MILS/8MILS
- 6. COPPER CLAD FINISH: 1oz ON ALL LAYERS.
- 7. SURFACE MOUNT PADS: 33.
- 8. SOLDERMASK: GREEN LPI SMOBC.
- 9. LEGENDS: WHITE. SINGLE-SIDED. NON-CONDUCTIVE EPOXY INK OR EQUIVALENT.
CLIPPED ALL LEGENDS FROM EXPOSED METAL.
- 10. PLATING: MUST BE LEAD FREE AND RoHS COMPLIANT.
- 11. FINISH: VENDOR SHOULD USE THE MOST ECONOMICAL LEAD FREE AND RoHS COMPLIANT PROCESS AVAILABLE OR AS SPECIFIED IN PURCHASE ORDER.
APPROVED FINISH:
HASL LEAD-FREE
IMMERSION TIN
IMMERSION GOLD
- 12. VENDOR LOGO & DATE CODE: ALLOWED IN INK ON BOTTOM SIDE ONLY.
- 13. THRU HOLES: 0.001" MIN.
- 14. TOLERANCES:
PLATED-THRU HOLES: +/-0.003"
PATTERN-TO-PATTERN: +/-0.005"
LEGEND TO LEGEND: +/-0.007"
SOLDERMASK TO PATTERN: /-0.005"



SIZE	QTY	SYM	PLATED	TOL
15	16	+	YES	+/-3.0
125	4	X	YES	+/-3.0
40	20	□	YES	+/-3.0
37	3	◇	YES	+/-3.0
20	1	⊗	YES	+/-3.0