
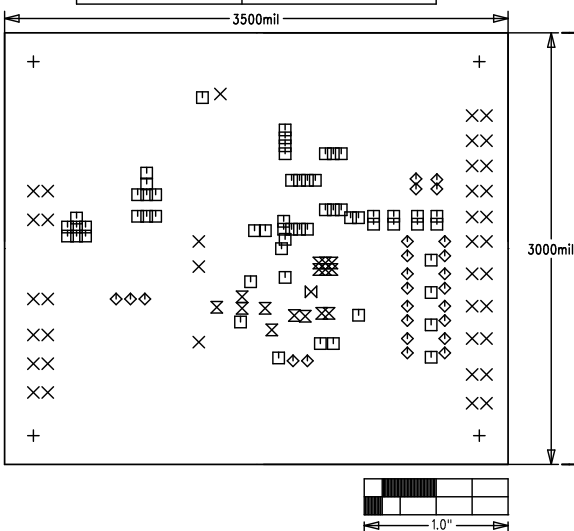


| | |
|---|-------------------------|
| MAX16813 EVKIT | |
| P/N: EPCB16813 | REV A |
|  maxim integrated | |
| LAYER | DRILL & MECHANICALS |
| DATE: | ALL UNITS ARE IN 0.001" |



| SIZE | QTY | SYM | PLATED | TOL |
|------|-----|-----|--------|------|
| 125 | 4 | + | YES | +/-3 |
| 40 | 38 | × | YES | +/-3 |
| 25 | 60 | □ | YES | +/-3 |
| 37 | 25 | ◇ | YES | +/-3 |
| 15 | 15 | ⊗ | YES | +/-3 |
| 35 | 1 | ⊠ | YES | +/-3 |

NOTES: UNLESS OTHERWISE SPECIFIED

- FABRICATE USING PROVIDED GERBER FILES PER LATEST REVISION OF IPC-A-600 UNLESS OTHERWISE NOTED.
- MATERIAL: RoHS COMPLIANT FR-408 OR SIMILAR LAMINATE MATERIAL WITH $T_g \geq 170$ AND COMPATIBLE WITH LEAD-FREE SOLDERING PROCESS.
- BOARD DIMENSIONS: 3.50"x3.00" +/- 0.010".
BOARD THICKNESS: 0.062"
- LAYERS: 4. SEE LAYER STACKUP CHART.
- MINIMUM TRACE/SPACING: 10MILS/8MILS.
- COPPER CLAD FINISH: 1oz MINIMUM ON ALL LAYERS
- SURFACE MOUNT PADS: 138.
- SOLDERMASK: GREEN LPI SMOBC.
- LEGENDS: WHITE, DOUBLE-SIDED, NON-CONDUCTIVE EPOXY INK OR EQUIVALENT. CLIPPED ALL LEGENDS FROM EXPOSED METAL.
- PLATING: MUST BE LEAD FREE AND RoHS COMPLIANT.
- FINISH: VENDOR SHOULD USE THE MOST ECONOMICAL LEAD FREE AND RoHS COMPLIANT PROCESS AVAILABLE OR AS SPECIFIED IN PURCHASE ORDER.
APPROVED FINISH:
HASL LEAD-FREE
IMMERSION TIN
IMMERSION GOLD
- PUT VENDOR LOGO & DATE CODE IN INK ON BOTTOM SIDE ONLY. DATE CODE FORMAT MUST BE YYYY ONLY.
- THRU HOLES: 0.001" MIN.
- TOLERANCES:
PLATED-THRU HOLES: +/-0.003"
PATTERN-TO-PATTERN: +/-0.005"
LEGEND TO LEGEND: +/-0.007"
SOLDERMASK TO PATTERN: +/-0.005"

| | |
|--------------------|--------|
| LAYER 1 TOP | 1.4MIL |
| PRE-PREG AS NEEDED | |
| LAYER 2 SGND | 1.4MIL |
| CORE AS NEEDED | |
| LAYER 3 PGND | 1.4MIL |
| PRE-PREG AS NEEDED | |
| LAYER 4 BOTTOM | 1.4MIL |

ALL DIMENSION IN MIL (0.001 INCH) UNLESS OTHERWISE SPECIFIED.