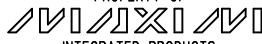
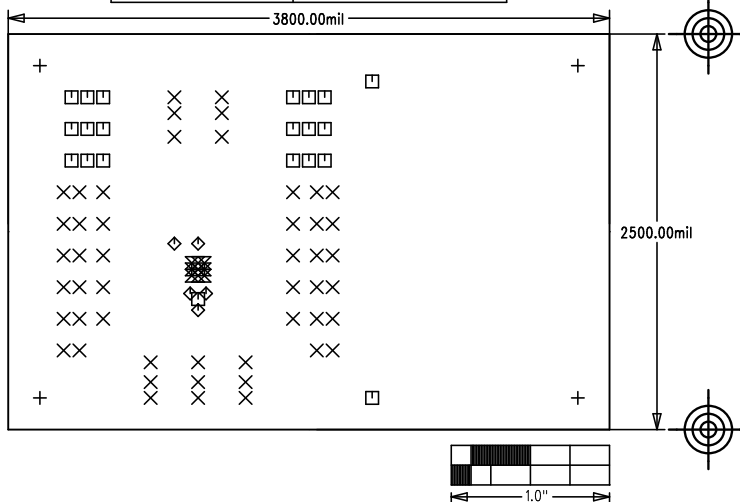


MAX14778 EVALUATION KIT	
P/N: EPCB14778	REV A
PROPERTY OF  INTEGRATED PRODUCTS	
LAYER	DRILL & MECHANICALS
DATE:	ALL UNITS ARE IN 0.001"



### NOTES: UNLESS OTHERWISE SPECIFIED

1. FABRICATE USING PROVIDED GERBER FILES PER LATEST REVISION OF IPC-A-600 UNLESS OTHERWISE NOTED.
2. MATERIAL: RoHS COMPLIANT FR-408 OR SIMILAR LAMINATE MATERIAL WITH  $T_g \geq 170$  AND COMPATIBLE WITH LEAD-FREE SOLDERING PROCESS.
3. BOARD DIMENSIONS: 3.80"x2.50" +/- 0.010".  
BOARD THICKNESS: 0.062"
4. LAYERS: 2.
5. MINIMUM TRACE/SPACING: 10 MILS/8MILS.
6. COPPER CLAD FINISH: 1oz MINIMUM ON ALL LAYERS.
7. SURFACE MOUNT PADS: 35.
8. SOLDERMASK: GREEN LPI SMOBC.
9. LEGENDS: WHITE, DOUBLE-SIDED, NON-CONDUCTIVE EPOXY INK OR EQUIVALENT.  
CLIPPED ALL LEGENDS FROM EXPOSED METAL.
10. PLATING: MUST BE LEAD FREE AND RoHS COMPLIANT.
11. FINISH: VENDOR SHOULD USE THE MOST ECONOMICAL LEAD FREE AND RoHS COMPLIANT PROCESS AVAILABLE OR AS SPECIFIED IN PURCHASE ORDER.  
APPROVED FINISH:  
HASL LEAD-FREE  
IMMERSION TIN  
IMMERSION GOLD
12. VENDOR LOGO & DATE CODE: ALLOWED IN INK ON BOTTOM SIDE ONLY.
13. THRU HOLES: 0.001" MIN.
14. TOLERANCES:  
PLATED-THRU HOLES: +/-0.003"  
PATTERN-TO-PATTERN: +/-0.005"  
LEGEND TO LEGEND: +/-0.007"  
SOLDERMASK TO PATTERN: +/-0.005"

SIZE	QTY	SYM	PLATED	TOL
125	4	+	YES	+/-3
40	49	X	YES	+/-3
37	21	□	YES	+/-3
25	5	◇	YES	+/-3
20	8	⊗	YES	+/-3
35	1	⊠	YES	+/-3