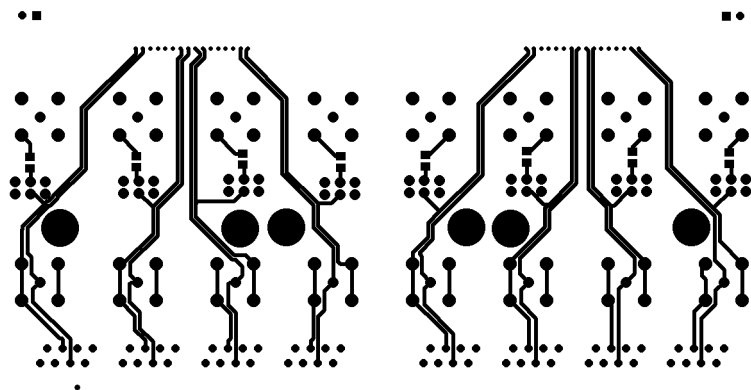
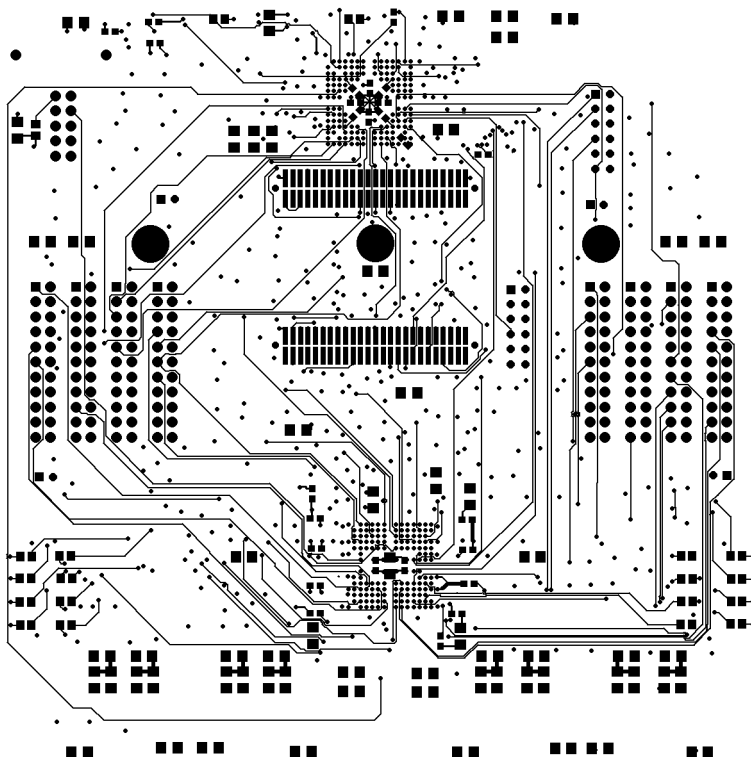


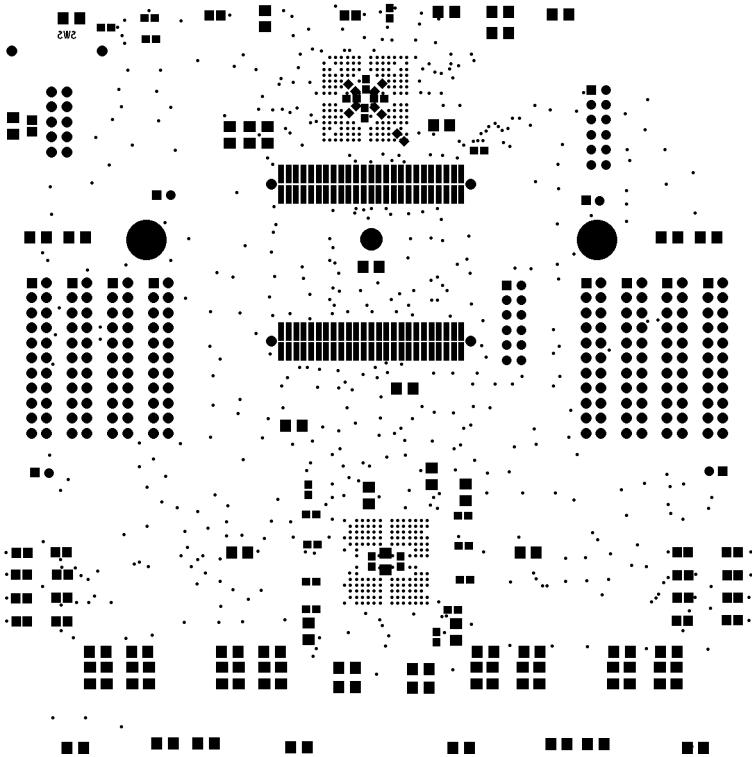
SILKtopPG
SILKtopBG

NOTES: SEE README FILE
CONTACT(ALL ISSUES):
STEVE SCULLY
972.371.4544



ETCH BOTTOM

NOTES: SEE README FILE
CONTACT(ALL ISSUES):
STEVE SCULLY
972.371.4544

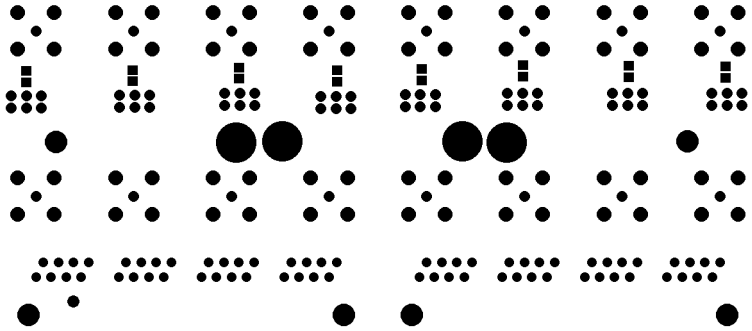


..

.....

.....

..

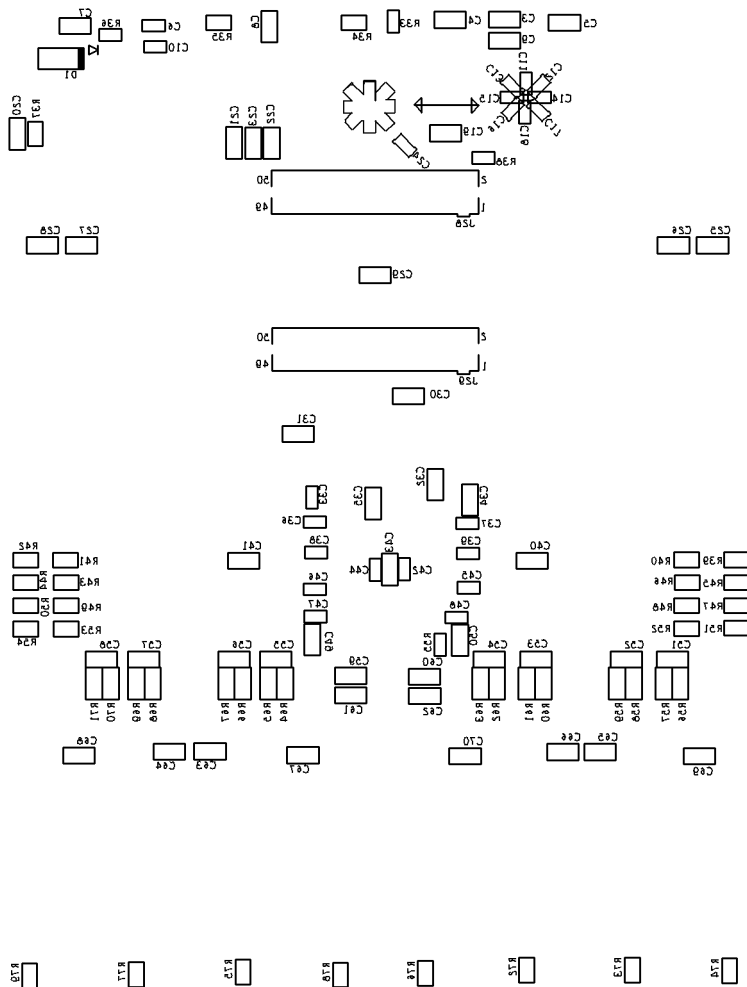


0005\81\80
0AS0X08S88320

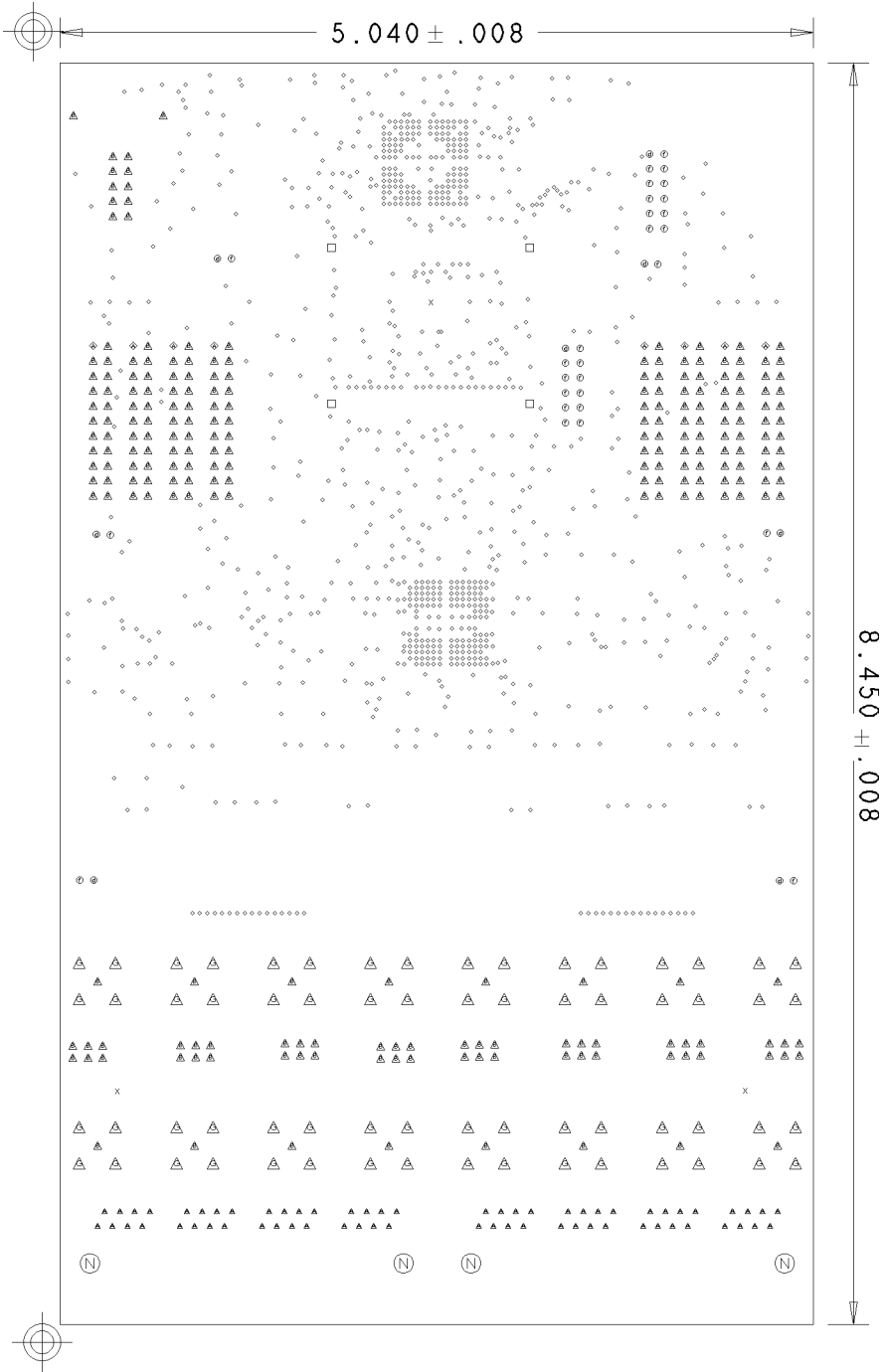


SMbotBG
SMbotPG

NOTES: SEE README FILE
CONTACT(ALL ISSUES):
STEVE SCULLY
972.371.4544

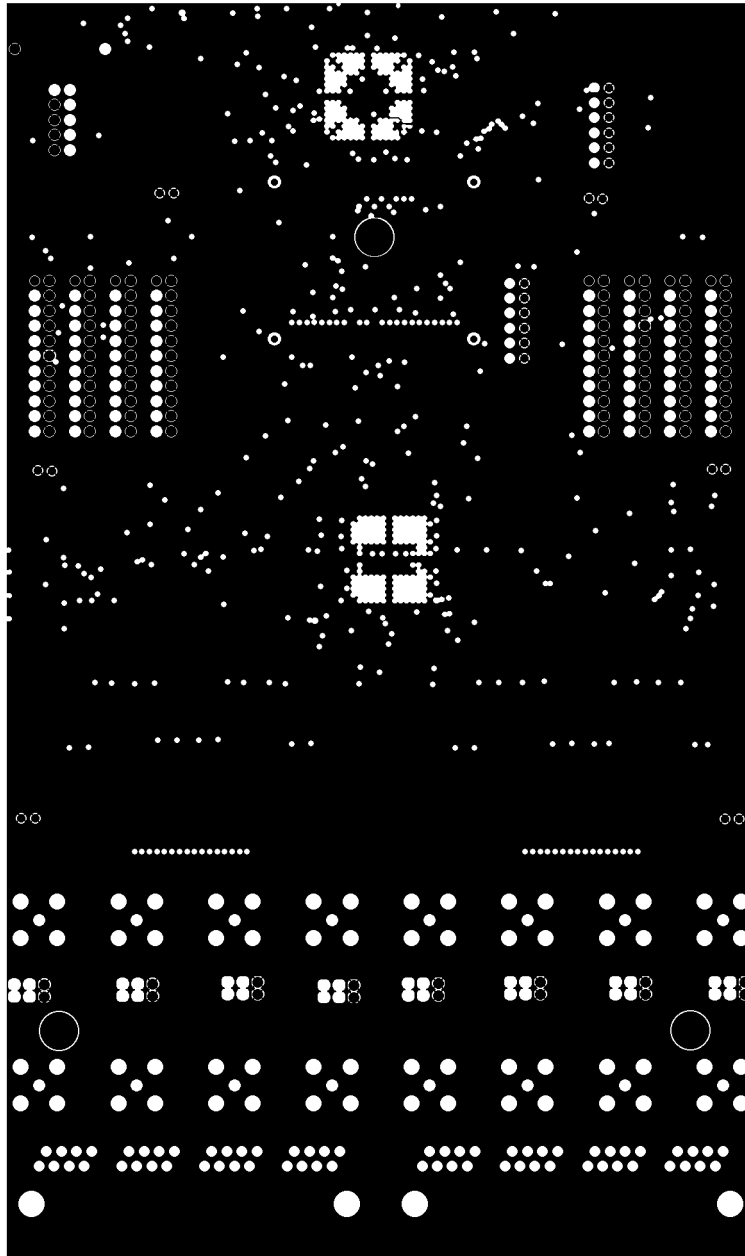


NOTES: SEE README FILE
CONTACT (ALL ISSUES):
STEVE SCULLY
972.371.4544



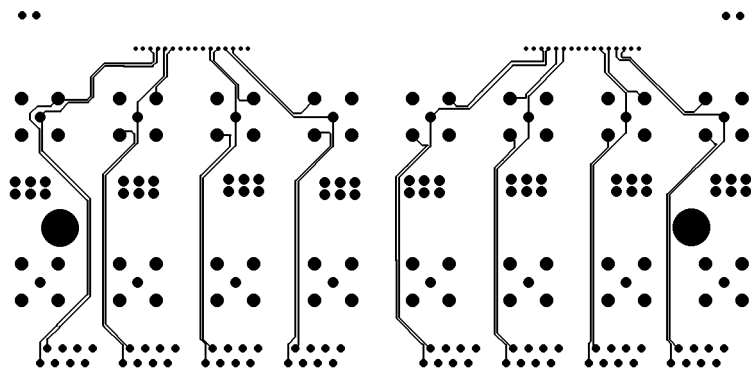
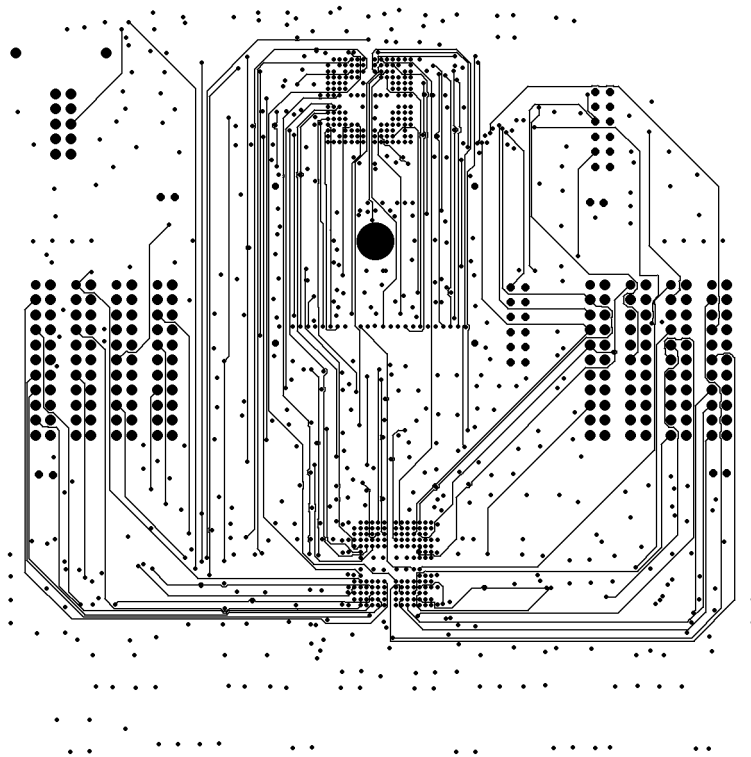
NOTES: SEE README FILE
CONTACT(ALL ISSUES):
STEVE SCULLY
972.371.4544

DRILL CHART			
ALL UNITS ARE IN MILS			
FIGURE	SIZE	PLATED	QTY
◦	10.0	PLATED	960
◦	13.0	PLATED	32
▲	36.0	PLATED	64
⊕	36.0	PLATED	8
⊖	41.0	PLATED	28
⊗	42.0	PLATED	8
▲	48.0	PLATED	244
△	71.0	PLATED	64
x	125.0	PLATED	3
□	47.0	NON-PLATED	4
(N)	130.0	NON-PLATED	4



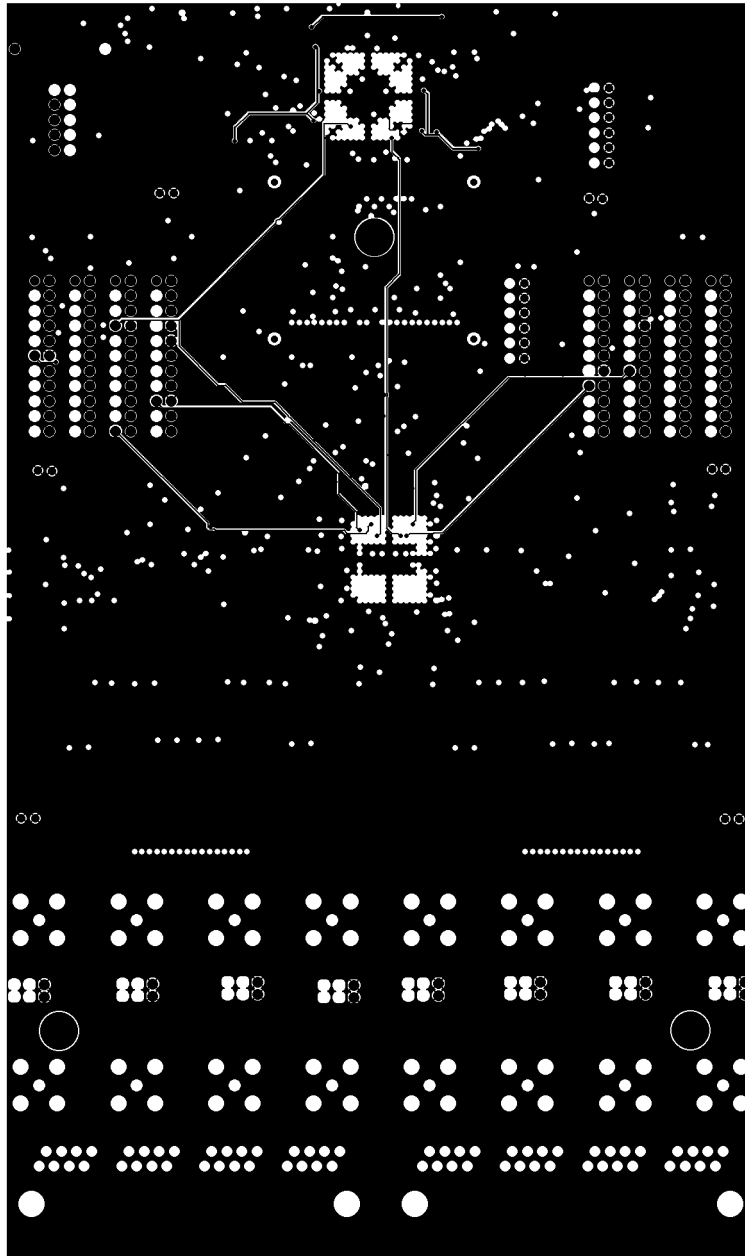
ETCH L2GND

NOTES: SEE README FILE
CONTACT(ALL ISSUES):
STEVE SCULLY
972.371.4544



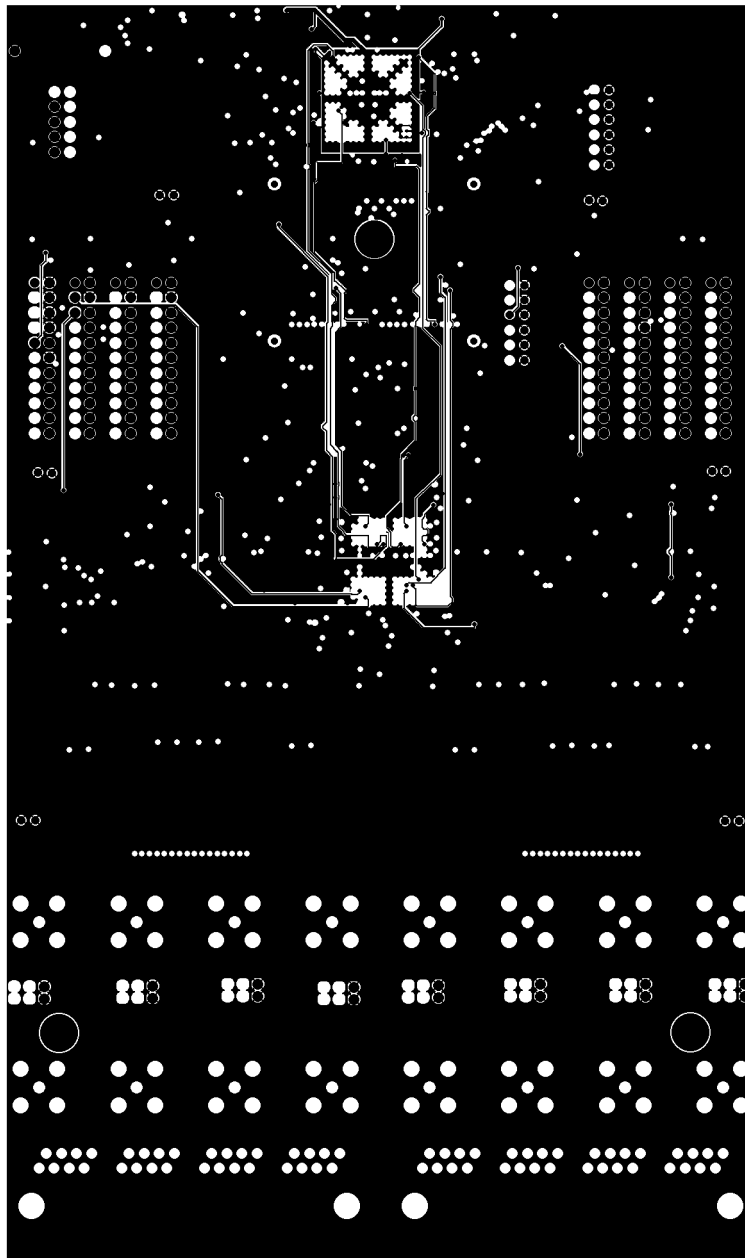
ETCH L3

NOTES: SEE README FILE
CONTACT(ALL ISSUES):
STEVE SCULLY
972.371.4544



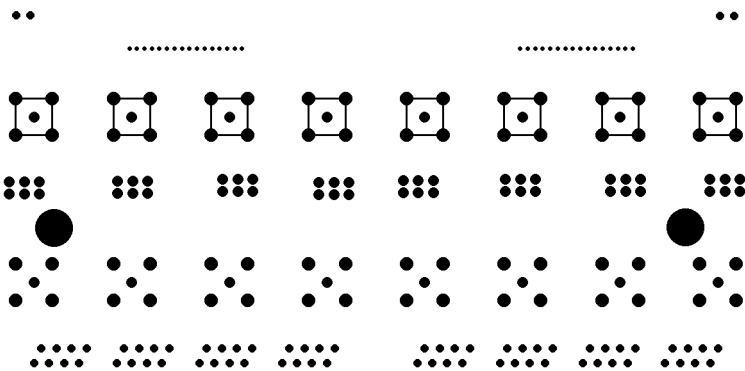
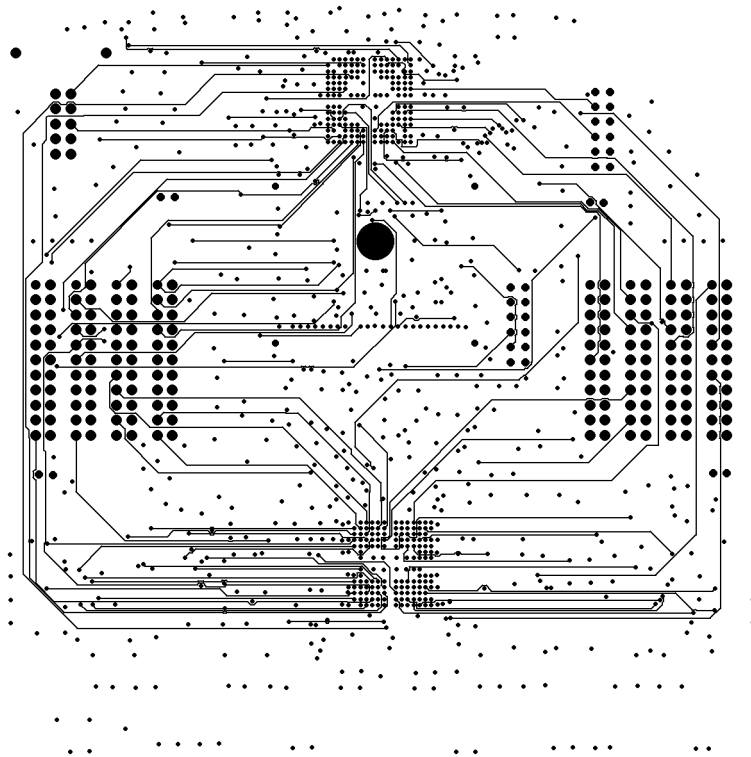
ETCH L4GND_S

NOTES: SEE README FILE
CONTACT(ALL ISSUES):
STEVE SCULLY
972.371.4544



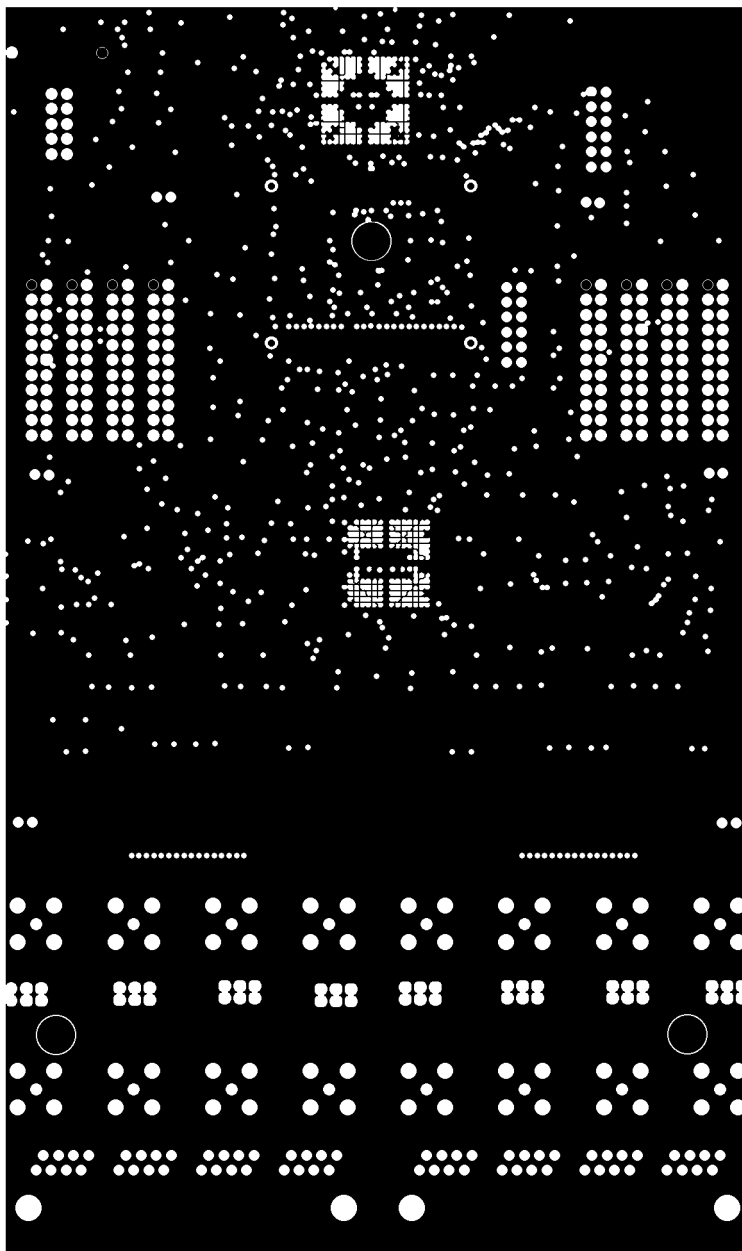
ETCH L5GND_S

NOTES: SEE README FILE
CONTACT(ALL ISSUES):
STEVE SCULLY
972.371.4544



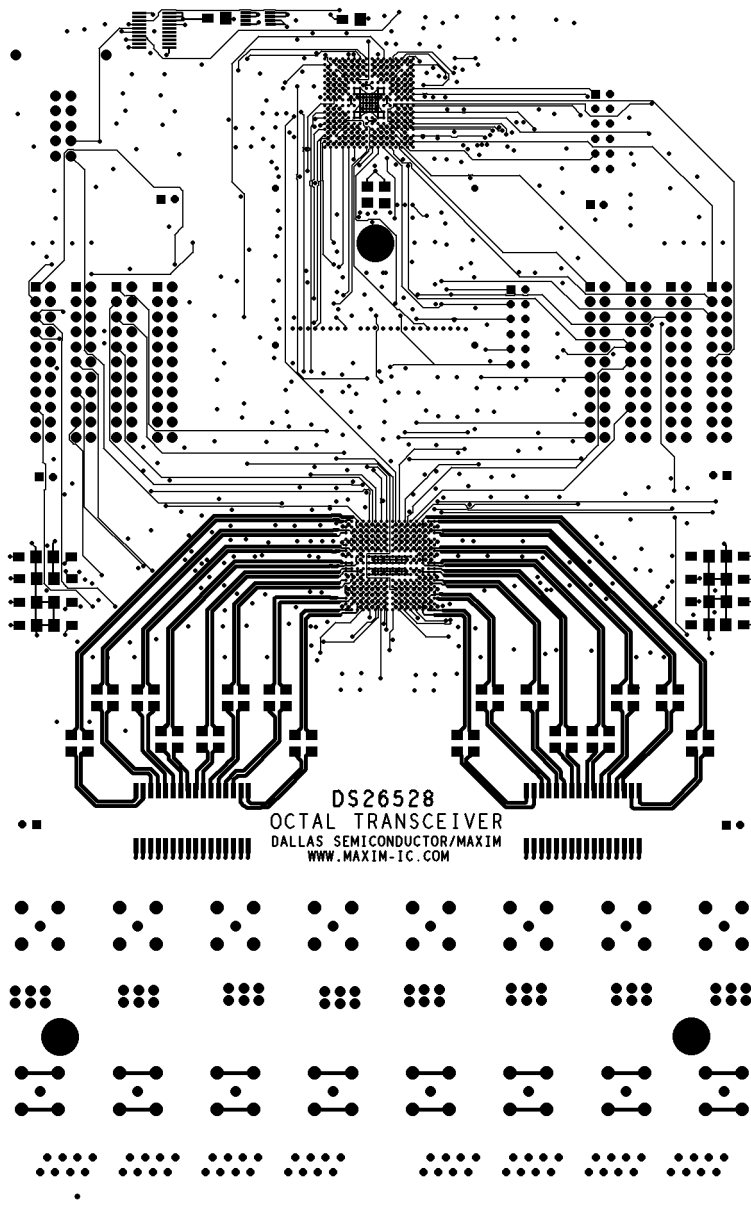
ETCH L6

NOTES: SEE README FILE
CONTACT(ALL ISSUES):
STEVE SCULLY
972.371.4544



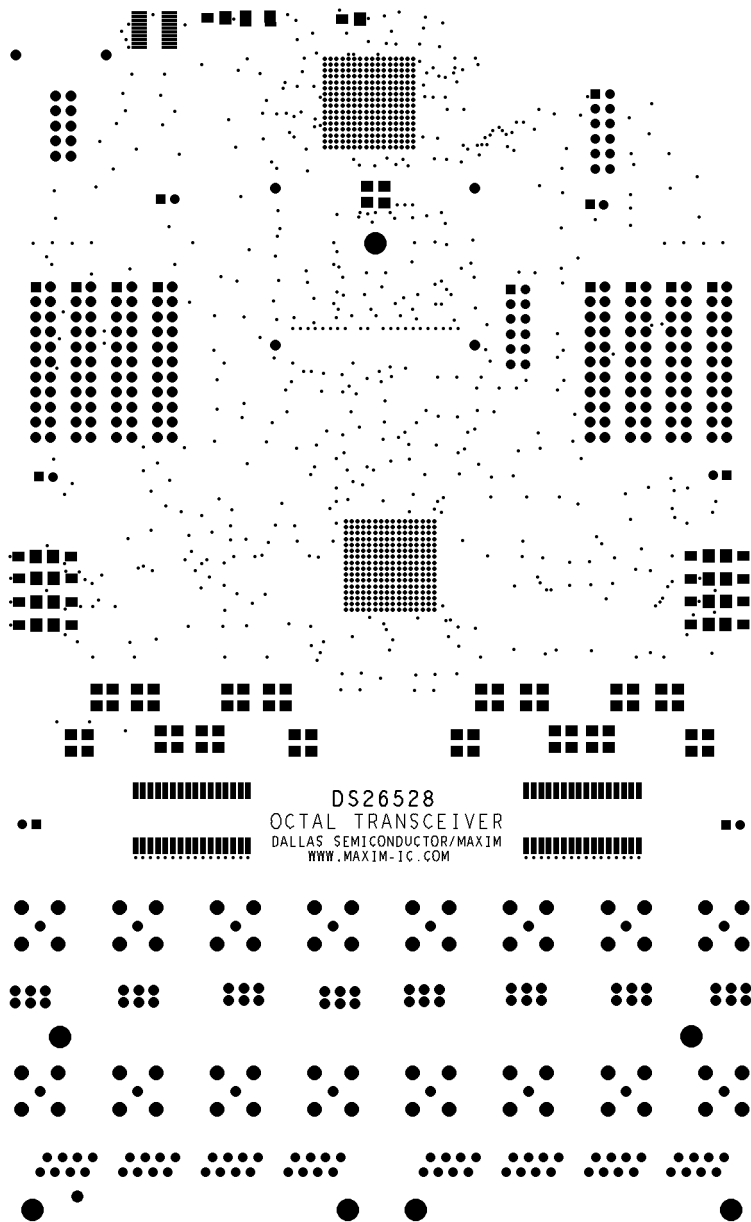
ETCH L7VCC

NOTES: SEE README FILE
CONTACT(ALL ISSUES):
STEVE SCULLY
972.371.4544



ETCH TOP

NOTES: SEE README FILE
CONTACT (ALL ISSUES):
STEVE SCULLY
972.371.4544



DS26528
OCTAL TRANSCEIVER
DALLAS SEMICONDUCTOR/MAXIM
WWW.MAXIM-IC.COM



SMtopBG
SMtopPG

NOTES: SEE README FILE
CONTACT(ALL ISSUES):
STEVE SCULLY
972.371.4544