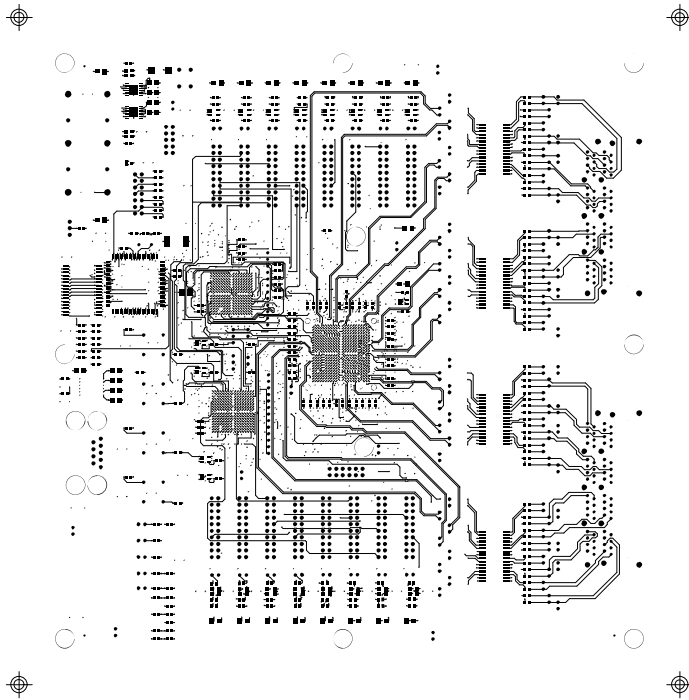
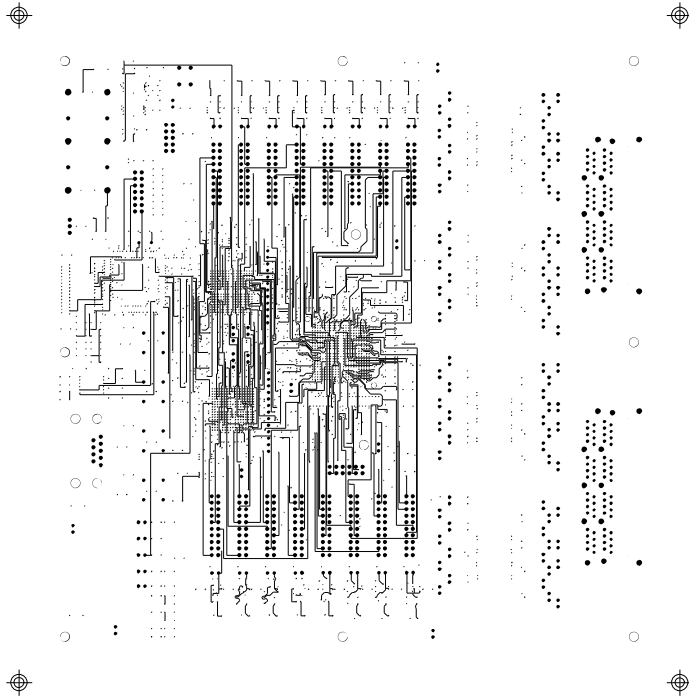


MAXIM 2008  
DS26519DK01B0



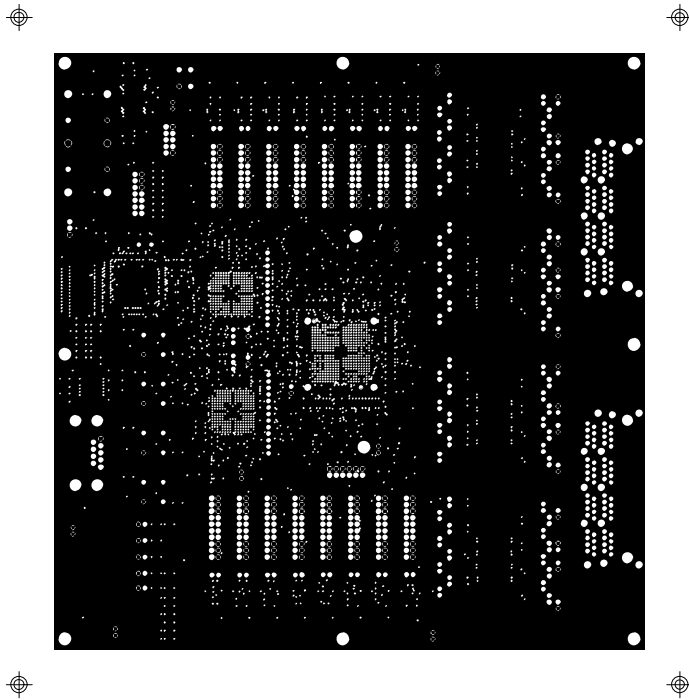
MAXIM 2008  
DS26519DK01B0

TOP LAYER - SIG 1



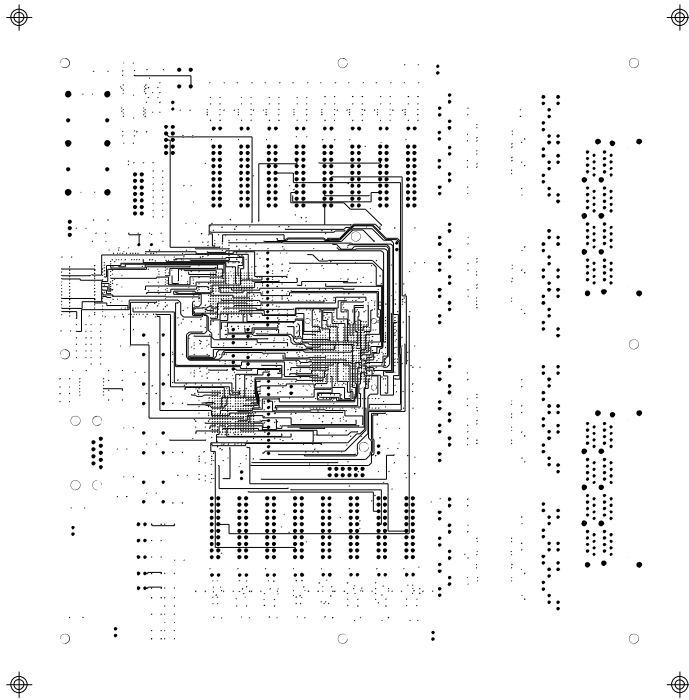
MAXIM 2008  
DS26519DK01B0

LAYER 2 - SIG 2



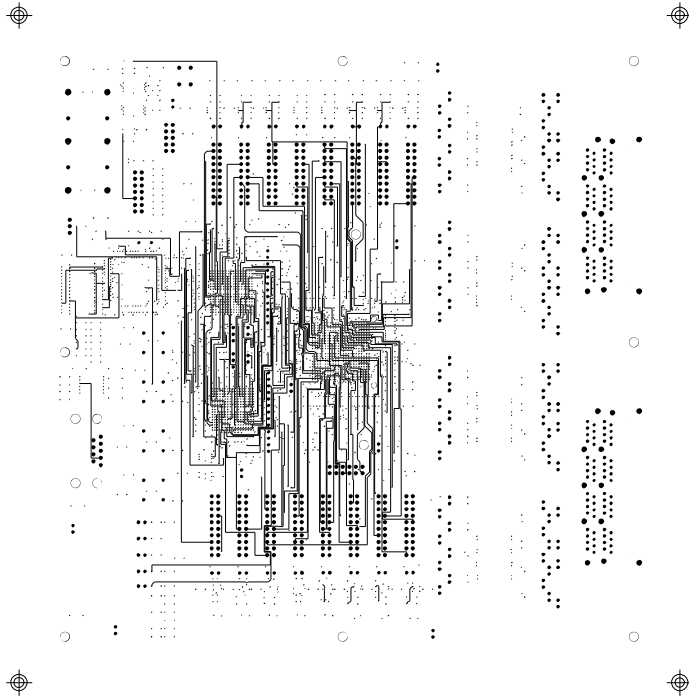
MAXIM 2008  
DS26519DK01B0

LAYER 3 - GND



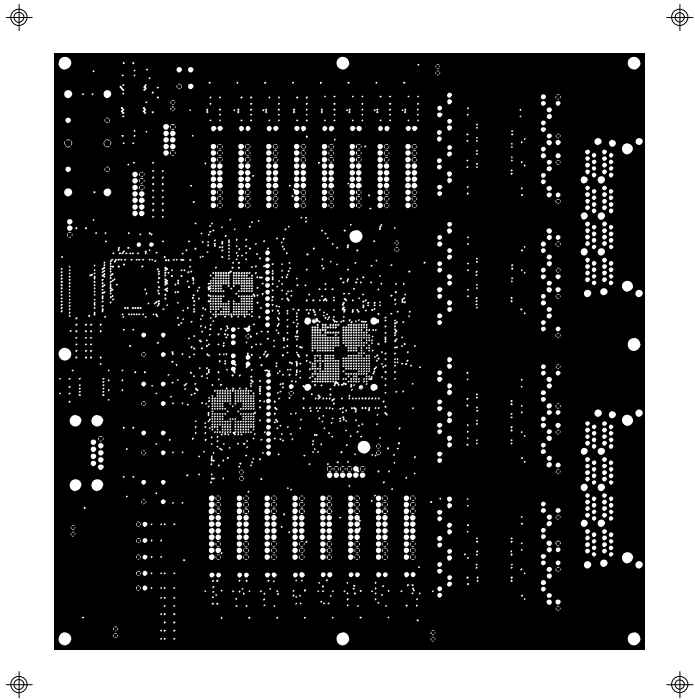
MAXIM 2008  
DS26519DK01B0

LAYER 4 - SIG 3



MAXIM 2008  
DS26519DK01B0

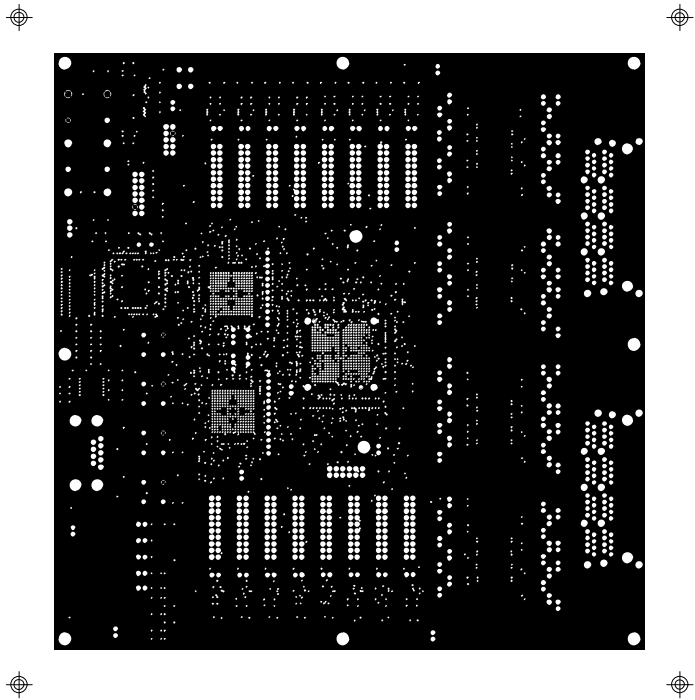
LAYER 5 - SIG 4



MAXIM 2008  
DS26519DK01B0

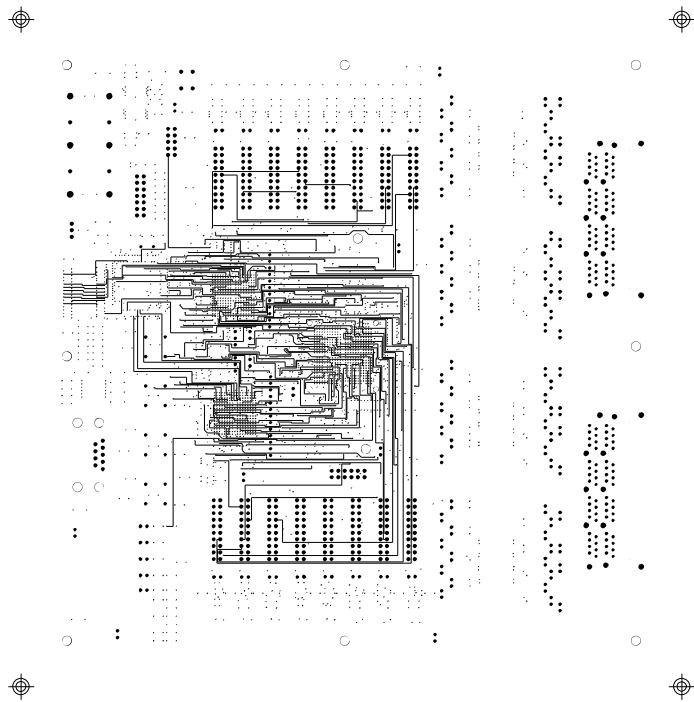
LAYER 6 - GND





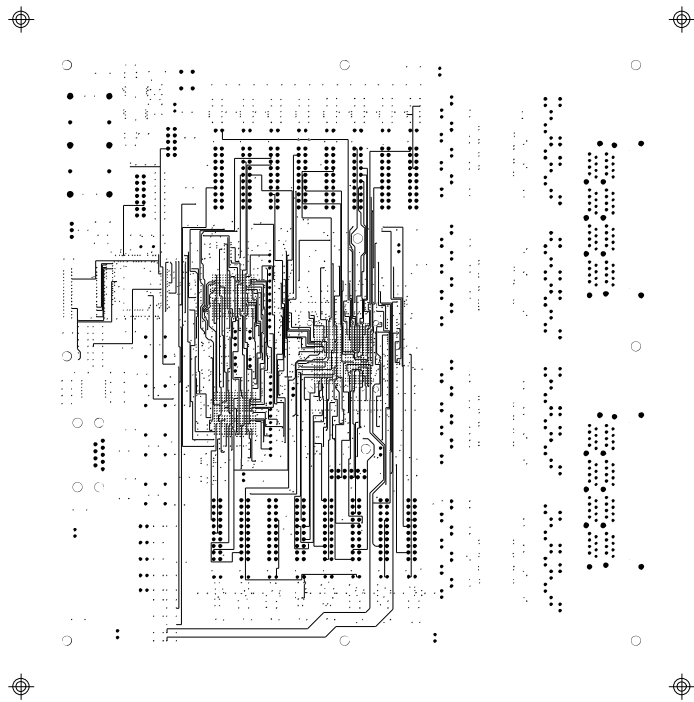
MAXIM 2008  
DS26519DK01B0

LAYER 7 - PWR



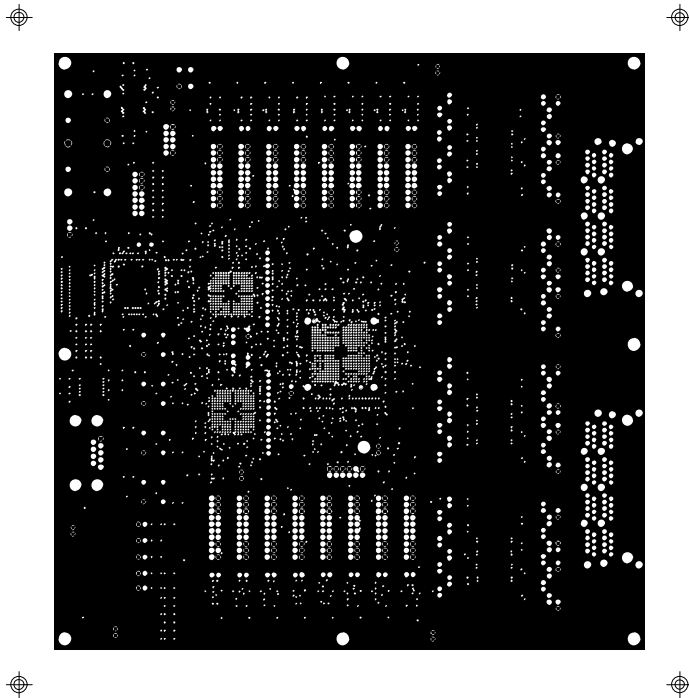
MAXIM 2008  
DS26519DK01B0

LAYER 8 - SIG 5



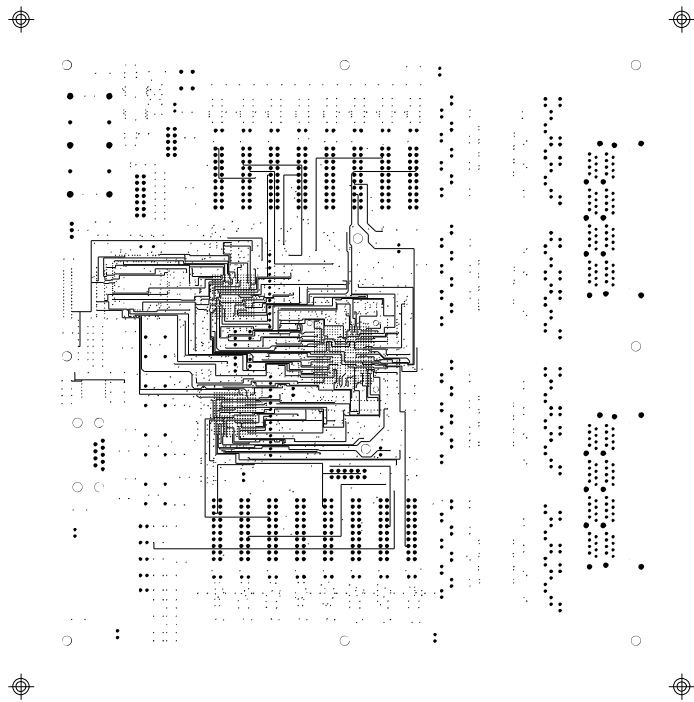
MAXIM 2008  
DS26519DK01B0

LAYER 9 - SIG 6



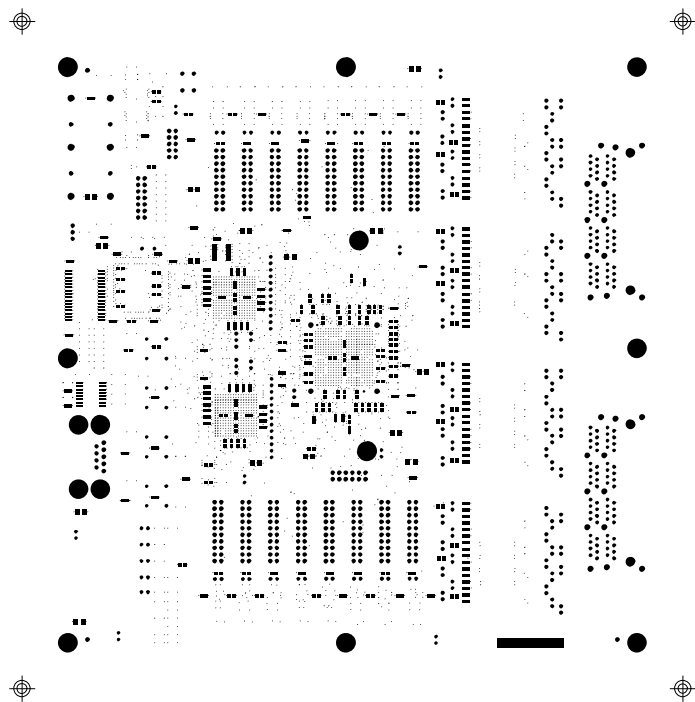
MAXIM 2008  
DS26519DK01B0

LAYER 10 - GND



MAXIM 2008  
DS26519DK01B0

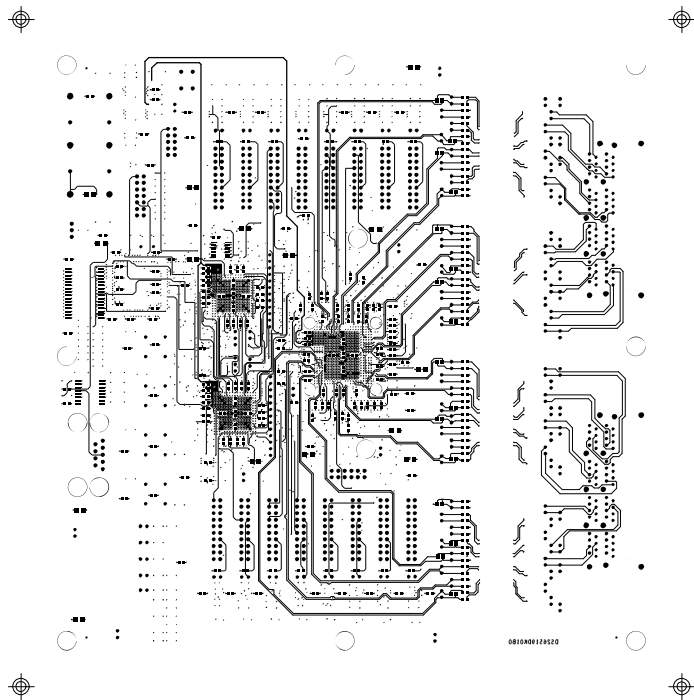
LAYER 11 - SIG 7



MAXIM 2008  
DS26519DK01B0

BSM

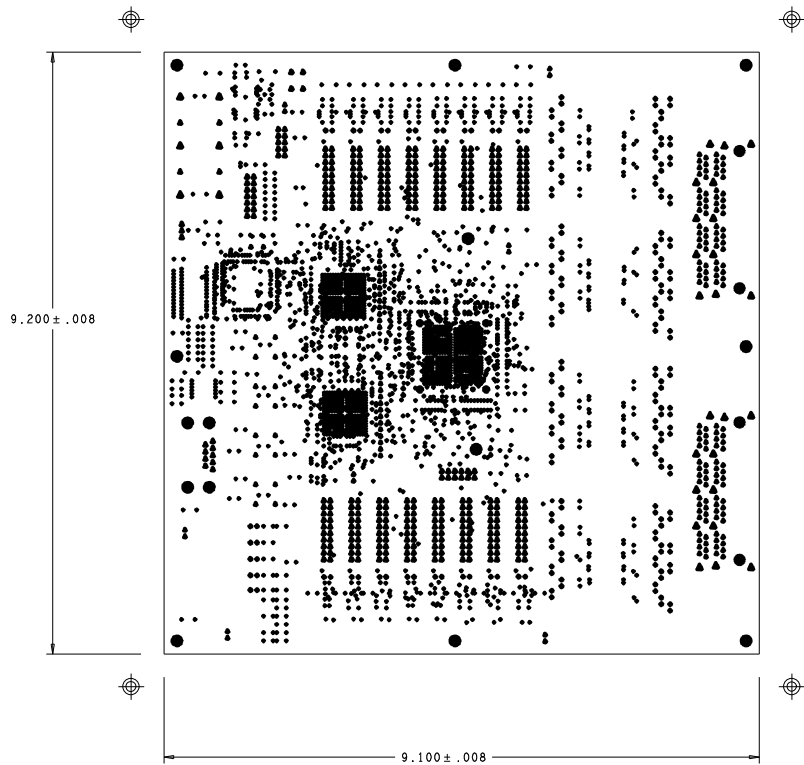




MAXIM 2008  
DS26519DK01B0

BOTTOM LAYER - SIG 8





MAXIM 2008  
DS26519DK01B0  
FABRICATION DRAWING

LAYER 1 - TOP.ART -SIG 1 (1/2 OZ.)	SEE NOTE 10.	DIELECTRIC THICKNESS+.015
LAYER 2 - L2.ART -SIG 2 (1/2 OZ.)		DIELECTRIC THICKNESS+.004
LAYER 3 - L3.ART -GROUND PLANE (1/2 OZ.)		DIELECTRIC THICKNESS+.005
LAYER 4 - L4.ART -SIG 3 (1/2 OZ.)		DIELECTRIC THICKNESS+.005
LAYER 5 - L5.ART -SIG 4 (1/2 OZ.)		DIELECTRIC THICKNESS+.005
LAYER 6 - L6.ART -GROUND PLANE (1/2 OZ.)		DIELECTRIC THICKNESS+AS REQUIRED
LAYER 7 - L7.ART -V3.3 PLANE (1/2 OZ.)		DIELECTRIC THICKNESS+.005
LAYER 8 - L8.ART -SIG 5 (1/2 OZ.)		DIELECTRIC THICKNESS+.005
LAYER 9 - L9.ART -SIG 6 (1/2 OZ.)		DIELECTRIC THICKNESS+.005
LAYER 10 -L10.ART -GROUND PLANE (1/2 OZ.)		DIELECTRIC THICKNESS+.004
LAYER 11 -L11.ART -SIG 7 (1/2 OZ.)		DIELECTRIC THICKNESS+.015
LAYER 12 -BOTTOM.ART -SIG 8 (1/2 OZ.)	SEE NOTE 10.	

- NOTES: UNLESS OTHERWISE SPECIFIED
1. MATERIAL: FR-4. DIELECTRIC CONSTANT+4.5.
  2. THICKNESS: .082 +/- 10% WITH DIELECTRIC SEPARATION BETWEEN LAYERS AS SHOWN ABOVE.
  3. BUILD/MANUFACTURE TO BEST COMMERCIAL STANDARDS.
  4. HOLE SIZES ARE FINISHED SIZE.
  5. MINIMUM CONDUCTOR WIDTH: .005.
  6. MINIMUM CONDUCTOR SPACING: .005.
  7. SOLDERMASK: LPI. BOTH SIDES WITH EXPOSED COPPER AREAS.  
PLATED WITH STANDARD 3-8 MICROINCHES IMMERSION GOLD OVER  
100 MICROINCHES MINIMUM ELECTROLESS NICKEL.
  8. SILKSCREEN TOP AND BOTTOM USING WHITE NON-CONDUCTIVE INK.
  9. ALL DIMENSIONS ARE IN INCHES UNLESS OTHERWISE SPECIFIED.
  10. COPPER EXTERNAL: 1/2 OZ. PLATED TO 1 OZ.

DRILL CHART: TOP to BOTTOM				
ALL UNITS ARE IN MILS				
FIGURE	SIZE	TOLERANCE	PLATED	QTY
•	10.0	+0.0/-10.0	PLATED	2745
•	36.0	+3.0/-3.0	PLATED	187
•	40.0	+3.0/-3.0	PLATED	214
▲	48.0	+3.0/-3.0	PLATED	376
▲	71.0	+3.0/-3.0	PLATED	24
▲	85.0	+3.0/-3.0	PLATED	6
•	35.0	+2.0/-2.0	NON-PLATED	2
●	70.0	+3.0/-3.0	NON-PLATED	4
●	130.0	+3.0/-3.0	NON-PLATED	4
●	140.0	+3.0/-3.0	NON-PLATED	14