
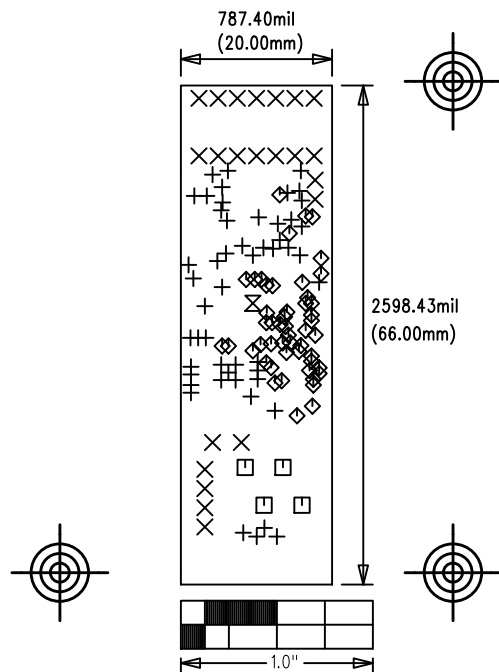


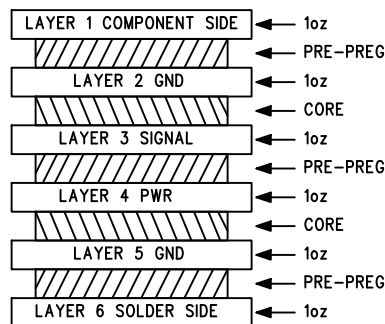
MAXREFDES42# IO-Link RTD Temp Sensor	
P/N: EPCBREFDES42	REV B
 <b>maxim integrated™</b>	
LAYER	DRILL & MECHANICALS
DATE:	ALL UNITS ARE IN 0.001"



SIZE	QTY	SYM	PLATED	TOL
15	51	+	YES	+/-3.0
37	22	×	YES	+/-3.0
45	4	□	YES	+/-3.0
8	50	◇	YES	+/-3.0
25	1	⊗	YES	+/-3.0

## NOTES: UNLESS OTHERWISE SPECIFIED

- FABRICATE USING PROVIDED GERBER FILES PER LATEST REVISION OF IPC-A-600 UNLESS OTHERWISE NOTED.
- MATERIAL: RoHS COMPLIANT FR-408 AND COMPATIBLE WITH LEAD-FREE SOLDERING PROCESS.
- BOARD DIMENSIONS: 0.787" x 2.598" (20mm x 66.00mm) +/- 0.010". BOARD THICKNESS: 0.062"
- LAYERS: 6.
- MINIMUM TRACE/SPACING: 3MILS/3MILS.
- COPPER CLAD FINISH: 1oz MINIMUM ON OUTER LAYERS AND 1oz ON INNER LAYERS.
- SURFACE MOUNT PADS: 225.
- SOLDERMASK: GREEN TAIYO PSR-4000. SOLDERMASK APERTURE TOLERANCE: +/-0.0005".
- LEGENDS: WHITE, DOUBLE-SIDED, NON-CONDUCTIVE EPOXY INK OR EQUIVALENT. CLIPPED ALL LEGENDS FROM EXPOSED METAL.
- PLATING: MUST BE LEAD FREE AND RoHS COMPLIANT.
- FINISH: 3-8u" IMMERSION Au OVER 100u" Ni.
- VENDOR LOGO & DATE CODE IN INK ON BOTTOM SIDE ONLY. DATE CODE FORMAT MUST BE YYWW ONLY.
- THRU HOLES: 0.001" MIN.
- TOLERANCES:  
PLATED-THRU HOLES: +/-0.003"  
PATTERN-TO-PATTERN: +/-0.005"  
LEGEND TO LEGEND: +/-0.007"



## CROSS SECTION DETAIL