
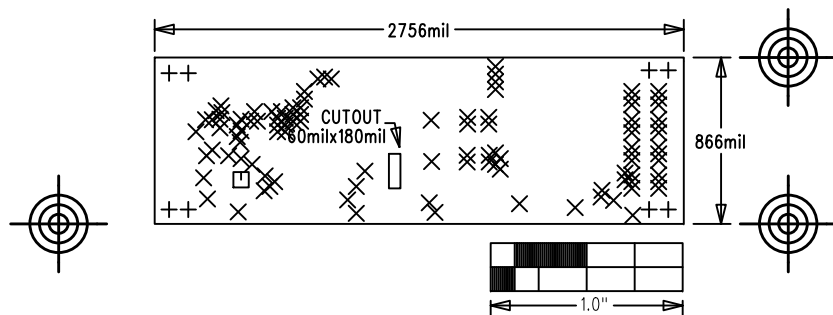


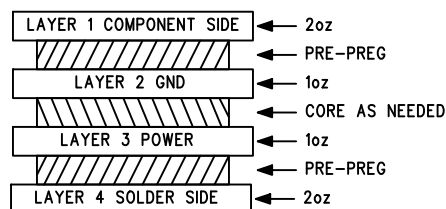
MAXREFDES41#	
P/N: EPCBREFDES41	REV A
 maxim integrated™	
LAYER	DRILL & MECHANICALS
ALL UNITS ARE IN 0.001"	



SIZE	QTY	SYM	PLATED	TOL
40	8	+	YES	+/-3.0
12	103	X	YES	+/-3.0
25	1	□	YES	+/-3.0

NOTES: UNLESS OTHERWISE SPECIFIED

- FABRICATE USING PROVIDED GERBER FILES PER LATEST REVISION OF IPC-A-600 UNLESS OTHERWISE NOTED.
- MATERIAL: RoHS COMPLIANT FR-408 OR SIMILAR LAMINATE MATERIAL WITH $T_g \geq 170$ AND COMPATIBLE WITH LEAD-FREE SOLDERING PROCESS.
- BOARD DIMENSIONS: 2.756"x0.866" (70mmx22mm) +/- 0.010".
BOARD THICKNESS: 0.062".
- LAYERS: 4.
- MINIMUM TRACE/SPACING: 10 MILS/8MILS.
- COPPER CLAD FINISH: 2oz MINIMUM ON OUTER LAYERS AND 1oz ON INNER LAYERS.
- SURFACE MOUNT PADS: 216.
- SOLDERMASK: GREEN LPI SMOBC.
- LEGENDS: WHITE, DOUBLE-SIDED, NON-CONDUCTIVE EPOXY INK OR EQUIVALENT. CLIPPED ALL LEGENDS FROM EXPOSED METAL.
- PLATING: MUST BE LEAD FREE AND RoHS COMPLIANT.
- FINISH: VENDOR SHOULD USE THE MOST ECONOMICAL LEAD FREE AND RoHS COMPLIANT PROCESS AVAILABLE OR AS SPECIFIED IN PURCHASE ORDER.
APPROVED FINISH:
HASL LEAD-FREE
IMMERSION TIN
IMMERSION GOLD
- VENDOR LOGO & DATE CODE IN INK ON BOTTOM SIDE ONLY. DATE CODE FORMAT MUST BE YYWW ONLY.
- THRU HOLES: 0.001" MIN.
- TOLERANCES:
PLATED-THRU HOLES: +/-0.003"
PATTERN-TO-PATTERN: +/-0.005"
LEGEND TO LEGEND: +/-0.007"
SOLDERMASK TO PATTERN: +/-0.005"



CROSS SECTION DETAIL