
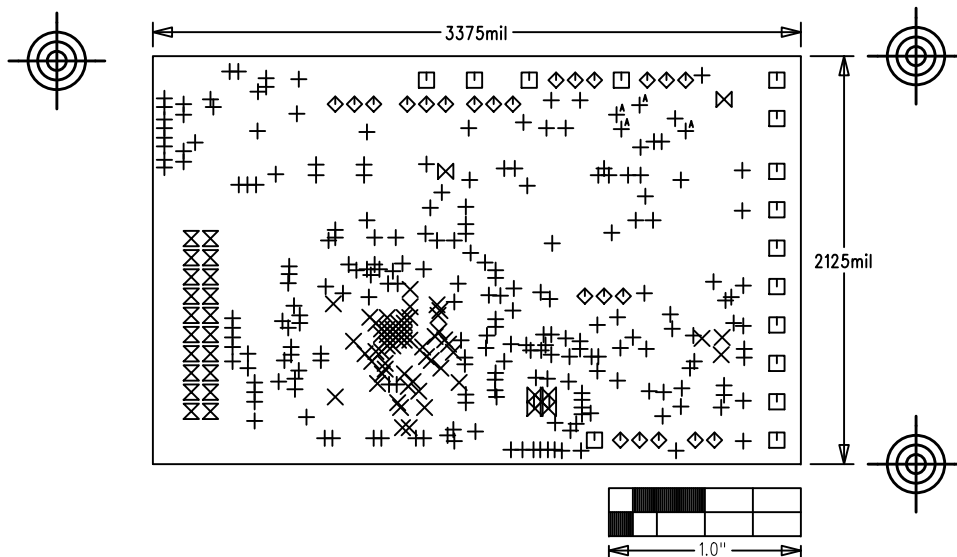


|  |                         |
|--|-------------------------|
| MAXREFDES38#   |                         |
| ECT/EPT Energy Measurement Unit  |                         |
| P/N: EPCBREFDES38  | REV<br>C                |
|  <b>maxim integrated™</b> |                         |
| LAYER<br>DRILL & MECHANICALS   |                         |
| DATE:  | ALL UNITS ARE IN 0.001" |



| SIZE | QTY | SYM            | PLATED | TOL    |
|------|-----|----------------|--------|--------|
| 12   | 221 | +              | YES    | +/-3.0 |
| 8    | 60  | X              | YES    | +/-3.0 |
| 63   | 15  | □              | YES    | +/-3.0 |
| 37   | 23  | ◇              | YES    | +/-3.0 |
| 40   | 20  | ⊗              | YES    | +/-3.0 |
| 15   | 7   | ⊠              | YES    | +/-3.0 |
| 25   | 4   | + <sup>A</sup> | YES    | +/-3.0 |

## NOTES: UNLESS OTHERWISE SPECIFIED

- FABRICATE USING PROVIDED GERBER FILES PER LATEST REVISION OF IPC-A-600 UNLESS OTHERWISE NOTED.
- MATERIAL: RoHS COMPLIANT FR-408 AND COMPATIBLE WITH LEAD-FREE SOLDERING PROCESS.
- BOARD DIMENSIONS: 3.375" x 2.125" ± 0.010".  
BOARD THICKNESS: 0.062"
- LAYERS: 6. SEE LAYER STACKUP BELOW.
- MINIMUM TRACE/SPACING: 3MILS/3MILS.
- COPPER CLAD FINISH: 1oz MINIMUM ON OUTER LAYERS AND 1oz ON INNER LAYERS.
- SURFACE MOUNT PADS: 731.
- SOLDERMASK: GREEN TAIYO PSR-4000.  
SOLDERMASK APERTURE TOLERANCE: ±0.0005".
- LEGENDS: WHITE, DOUBLE-SIDED, NON-CONDUCTIVE EPOXY INK OR EQUIVALENT.  
CLIPPED ALL LEGENDS FROM EXPOSED METAL.
- PLATING: MUST BE LEAD FREE AND RoHS COMPLIANT.
- FINISH: 3-8u" IMMERSION Au OVER 100u" Ni.
- VENDOR LOGO & DATE CODE IN INK ON BOTTOM SIDE ONLY. DATE CODE FORMAT MUST BE YYWW ONLY.
- THRU HOLES: 0.001" MIN.
- TOLERANCES:  
PLATED-THRU HOLES: ±0.003"  
PATTERN-TO-PATTERN: ±0.005"  
LEGEND TO LEGEND: ±0.007"

|                   | 90 OHM<br>DIFFERENTIAL |         |                | 45 OHM<br>SINGLE-ENDED |  |                      |
|-------------------|------------------------|---------|----------------|------------------------|--|----------------------|
|                   | TRACE<br>WIDTH         | SPACING | TRACE<br>WIDTH | TRACE<br>WIDTH         |  |                      |
| LAYER 1 TOP       | 11                     | 8       | 11             | 14                     |  | 1oz                  |
|                   |                        |         |                |                        |  | PRE-PREG Er=3.8 7MIL |
| LAYER 2 GND       | N/A                    | N/A     | N/A            | N/A                    |  | 1oz                  |
|                   |                        |         |                |                        |  | CORE AS NEEDED       |
| LAYER 3 PWR+SIGNS | N/A                    | N/A     | N/A            | N/A                    |  | 1oz                  |
|                   |                        |         |                |                        |  | PRE-PREG Er=3.8 8MIL |
| LAYER 4 PWR       | N/A                    | N/A     | N/A            | N/A                    |  | 1oz                  |
|                   |                        |         |                |                        |  | CORE AS NEEDED       |
| LAYER 5 GND       | N/A                    | N/A     | N/A            | N/A                    |  | 1oz                  |
|                   |                        |         |                |                        |  | PRE-PREG Er=3.8 7MIL |
| LAYER 12 BOTTOM   | N/A                    | N/A     | N/A            | N/A                    |  | 1oz                  |

IMPEDANCE TOLERANCE: ±10%

ALL DIMENSION IN MIL (0.001 INCH) UNLESS OTHERWISE SPECIFIED.

N/A - NOT AVAILABLE. DO NOT ROUTE TRACES OF THIS TYPE ON THE INDICATE LAYERS.