
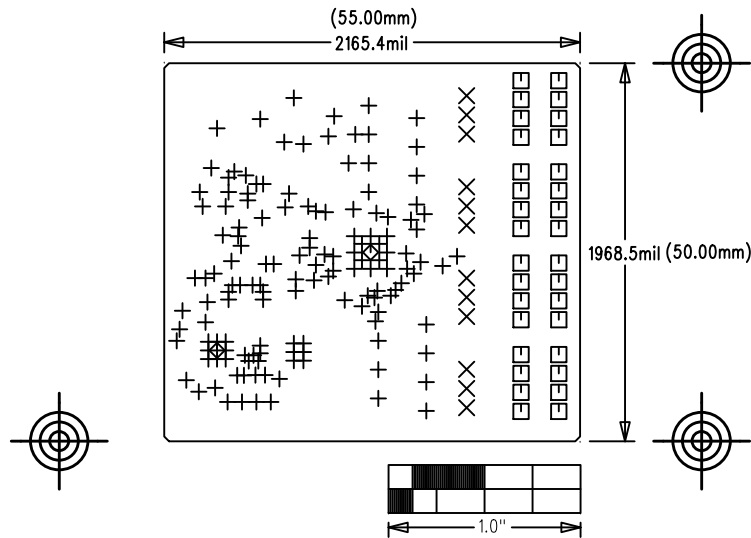


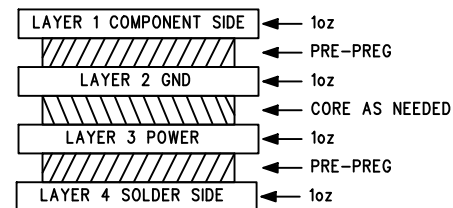
MAXREFDES37# IO-Link Servo Driver	
P/N: EPCBREFDES37	REV A
 maxim integrated™	
LAYER DRILL & MECHANICALS	
DATE:	ALL UNITS ARE IN 0.001"



SIZE	QTY	SYM	PLATED	TOL
12	142	+	YES	+/-3.0
37	12	X	YES	+/-3.0
50	32	□	YES	+/-3.0
20	2	◇	YES	+/-3.0

NOTES: UNLESS OTHERWISE SPECIFIED

- FABRICATE USING PROVIDED GERBER FILES PER LATEST REVISION OF IPC-A-600 UNLESS OTHERWISE NOTED.
- MATERIAL: RoHS COMPLIANT FR-408 AND COMPATIBLE WITH LEAD-FREE SOLDERING PROCESS.
- BOARD DIMENSIONS: 2.165" x 1.969" (55mm x 50.00mm) ± 0.010 ".
BOARD THICKNESS: 0.062"
- LAYERS: 4.
- MINIMUM TRACE/SPACING: 3MILS/3MILS.
- COPPER CLAD FINISH: 1oz ON OUTER LAYERS AND 1oz ON INNER LAYERS.
- SURFACE MOUNT PADS: 243.
- SOLDERMASK: GREEN TAIYO PSR-4000.
SOLDERMASK APERTURE TOLERANCE: ± 0.0005 ".
- LEGENDS: WHITE. DOUBLE-SIDED. NON-CONDUCTIVE EPOXY INK OR EQUIVALENT.
CLIPPED ALL LEGENDS FROM EXPOSED METAL.
- PLATING: MUST BE LEAD FREE AND RoHS COMPLIANT.
- FINISH: 3-8u" IMMERSION Au OVER 100u" Ni.
- VENDOR LOGO & DATE CODE IN INK ON BOTTOM SIDE ONLY. DATE CODE FORMAT MUST BE YYWW ONLY.
- THRU HOLES: 0.001" MIN.
- TOLERANCES:
PLATED-THRU HOLES: ± 0.003 "
PATTERN-TO-PATTERN: ± 0.005 "
LEGEND TO LEGEND: ± 0.007 "



CROSS SECTION DETAIL