
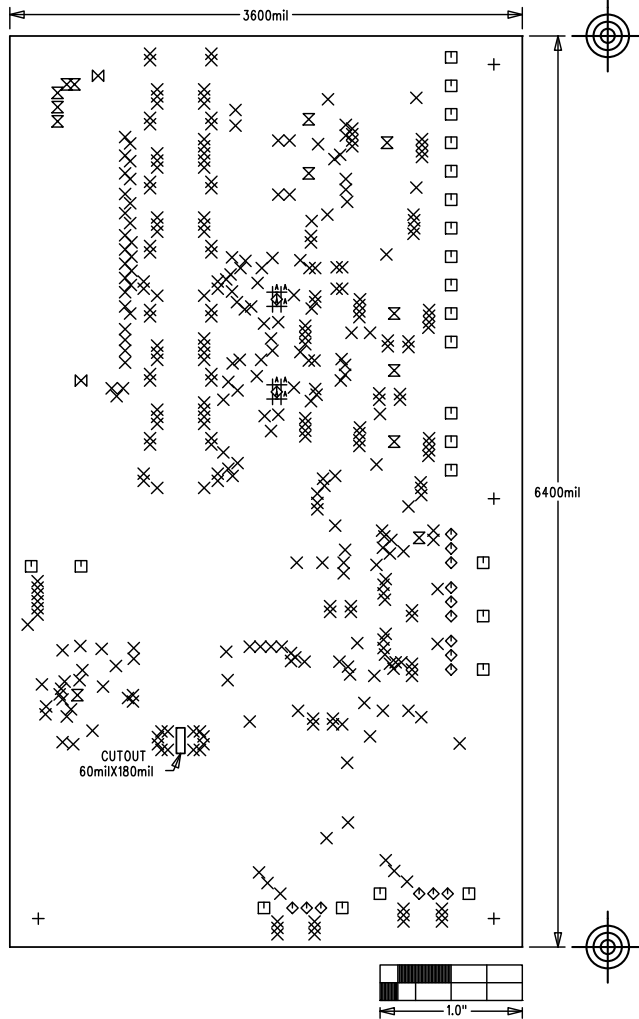
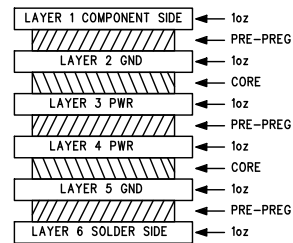


MAXREFDES32#	
Dual Input and Output Analog IO	
P/N: EPCBREFDES32	REV A
 maxim integrated™	
LAYER	DRILL & MECHANICALS
DATE:	ALL UNITS ARE IN 0.001"



NOTES: UNLESS OTHERWISE SPECIFIED

1. FABRICATE USING PROVIDED GERBER FILES PER LATEST REVISION OF IPC-A-600 UNLESS OTHERWISE NOTED.
2. MATERIAL: RoHS COMPLIANT FR-408 OR SIMILAR LAMINATE MATERIAL WITH $T_g \geq 170$ AND COMPATIBLE WITH LEAD-FREE SOLDERING PROCESS.
3. BOARD DIMENSIONS: 3.60"x6.40" \pm 0.010".
BOARD THICKNESS: 0.062"
4. LAYERS: 6. SEE LAYER STACKUP CHART BELOW.
5. MINIMUM TRACE/SPACING: 9 MILS/8 MILS.
6. COPPER CLAD FINISH: 1oz MINIMUM ON OUTER LAYERS AND 1oz ON INNER LAYERS.
7. SURFACE MOUNT PADS: 963.
8. SOLDERMASK: GREEN LPI SMOBC.
9. LEGENDS: WHITE, DOUBLE-SIDED, NON-CONDUCTIVE EPOXY INK OR EQUIVALENT.
CLIPPED ALL LEGENDS FROM EXPOSED METAL.
10. PLATING: MUST BE LEAD FREE AND RoHS COMPLIANT.
11. FINISH: VENDOR SHOULD USE THE MOST ECONOMICAL LEAD FREE AND RoHS COMPLIANT PROCESS AVAILABLE OR AS SPECIFIED IN PURCHASE ORDER.
APPROVED FINISH:
HASL LEAD-FREE
IMMERSION TIN
IMMERSION GOLD
12. VENDOR LOGO & DATE CODE IN INK ON BOTTOM SIDE ONLY. DATE CODE FORMAT MUST BE YYWW ONLY.
13. THRU HOLES: 0.001" MIN.
14. TOLERANCES:
PLATED-THRU HOLES: \pm 0.003"
PATTERN-TO-PATTERN: \pm 0.005"
LEGEND TO LEGEND: \pm 0.007"
SOLDERMASK TO PATTERN: \pm 0.005".



CROSS SECTION DETAIL

SIZE	QTY	SYM	PLATED	TOL
125	4	+	YES	\pm 3.0
15	364	X	YES	\pm 3.0
63	23	□	YES	\pm 3.0
37	17	◇	YES	\pm 3.0
25	13	⊗	YES	\pm 3.0
50	2	⊠	NO	\pm 3.0
20	8	⊕	YES	\pm 3.0