
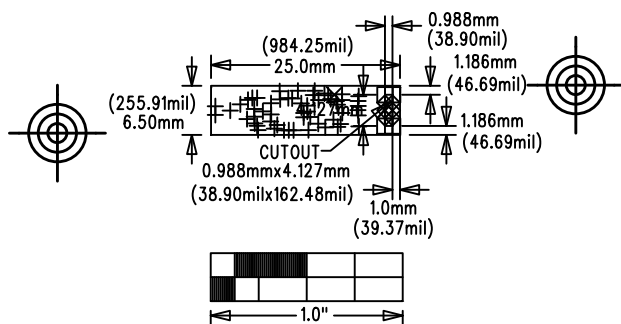


SANTA CRUZ (MAXREFDES23#)	
IO Link M12-4 Sensor Device	
P/N: EPCBREFDES23	REV A
 maxim integrated™	
LAYER DRILL & MECHANICALS	
DATE:	ALL UNITS ARE IN 0.001"

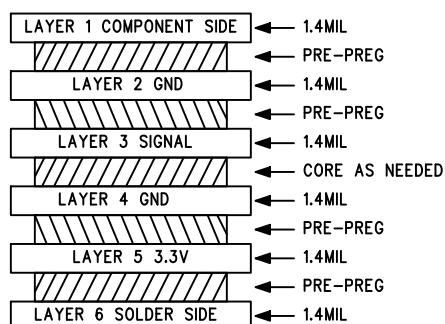
DO NOT MODIFY SOLDER MASK TOP



SIZE	QTY	SYM	PLATED	TOL
5	56	+	YES	+/-3.0
15	1	×	YES	+/-3.0
14	4	□	NO	+/-3.0
10	6	◇	YES	+/-3.0

NOTES: UNLESS OTHERWISE SPECIFIED

- FABRICATE USING PROVIDED GERBER FILES PER LATEST REVISION OF IPC-A-600 UNLESS OTHERWISE NOTED.
- MATERIAL: RoHS COMPLIANT FR-408 AND COMPATIBLE WITH LEAD-FREE SOLDERING PROCESS.
- BOARD DIMENSIONS: 0.256"x0.984"(6.50mmx25.0mm) +/- 0.010". BOARD THICKNESS: 0.062"
- LAYERS: 6.
- MINIMUM TRACE/SPACING: 3MILS/3MILS.
- COPPER CLAD FINISH: 1oz MINIMUM ON OUTER LAYERS AND 1oz ON INNER LAYERS.
- SURFACE MOUNT PADS: 124.
- SOLDERMASK: GREEN TAIYO PSR-4000. SOLDERMASK APERTURE TOLERANCE: +/-0.0005".
- LEGENDS: WHITE. DOUBLE-SIDED. NON-CONDUCTIVE EPOXY INK OR EQUIVALENT. CLIPPED ALL LEGENDS FROM EXPOSED METAL.
- PLATING: MUST BE LEAD FREE AND RoHS COMPLIANT.
- FINISH: 3-8u" IMMERSION Au OVER 100u" Ni.
- VENDOR LOGO & DATE CODE IN INK ON BOTTOM SIDE ONLY. DATE CODE FORMAT MUST BE YYWW ONLY.
- THRU HOLES: 0.001" MIN.
- TOLERANCES:
PLATED-THRU HOLES: +/-0.003"
PATTERN-TO-PATTERN: +/-0.005"
LEGEND TO LEGEND: +/-0.007"



CROSS SECTION DETAIL