
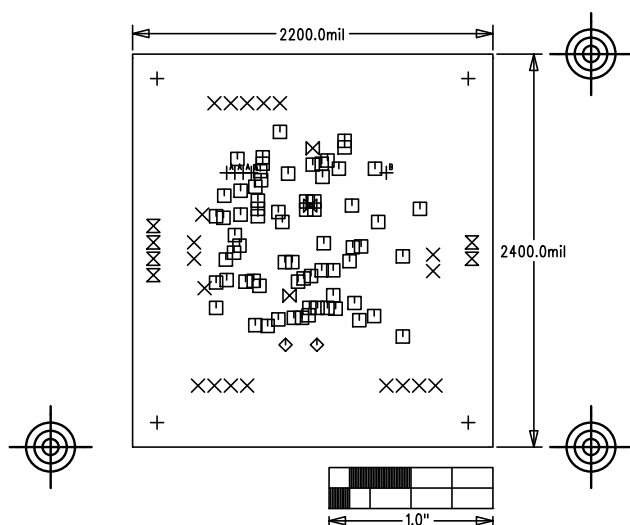


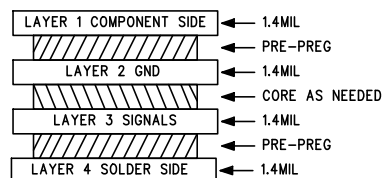
NOVATO (MAXREFDES16#)	
PT100 Smart Sensor Transmitter	
P/N: EPCBREFDES16	REV P1
	
LAYER	DRILL & MECHANICALS
DATE:	ALL UNITS ARE IN 0.001"



SIZE	QTY	SYM	PLATED	TOL
125	4	+	YES	+/-3.0
37	19	X	YES	+/-3.0
15	70	□	YES	+/-3.0
35	2	◇	YES	+/-3.0
50	6	⊗	YES	+/-3.0
20	3	⊠	YES	+/-3.0
25	4	+ ^A	YES	+/-3.0
40	1	+ ^B	YES	+/-3.0

NOTES: UNLESS OTHERWISE SPECIFIED

- FABRICATE USING PROVIDED GERBER FILES PER LATEST REVISION OF IPC-A-600 UNLESS OTHERWISE NOTED.
- MATERIAL: RoHS COMPLIANT FR-408 OR SIMILAR LAMINATE MATERIAL WITH $T_g \geq 170$ AND COMPATIBLE WITH LEAD-FREE SOLDERING PROCESS.
- BOARD DIMENSIONS: 2.20"X2.40" +/- 0.010".
BOARD THICKNESS: 0.062"
- LAYERS: 4.
- MINIMUM TRACE/SPACING: 10 MILS/10 MILS.
- COPPER CLAD FINISH: 1oz MINIMUM ON OUTER LAYERS AND 1oz ON INNER LAYERS.
- SURFACE MOUNT PADS: 276.
- SOLDERMASK: GREEN LPI SMOBC.
- LEGENDS: WHITE. DOUBLE-SIDED. NON-CONDUCTIVE EPOXY INK OR EQUIVALENT.
CLIPPED ALL LEGENDS FROM EXPOSED METAL.
- PLATING: MUST BE LEAD FREE AND RoHS COMPLIANT.
- FINISH: VENDOR SHOULD USE THE MOST ECONOMICAL LEAD FREE AND RoHS COMPLIANT PROCESS AVAILABLE OR AS SPECIFIED IN PURCHASE ORDER.
APPROVED FINISH:
HASL LEAD-FREE
IMMERSION TIN
IMMERSION GOLD
- VENDOR LOGO & DATE CODE IN INK ON BOTTOM SIDE ONLY. DATE CODE FORMAT MUST BE YYWW ONLY.
- THRU HOLES: 0.001" MIN.
- TOLERANCES:
PLATED-THRU HOLES: +/-0.003"
PATTERN-TO-PATTERN: +/-0.005"
LEGEND TO LEGEND: +/-0.007"
SOLDERMASK TO PATTERN: +/-0.005".



CROSS SECTION DETAIL