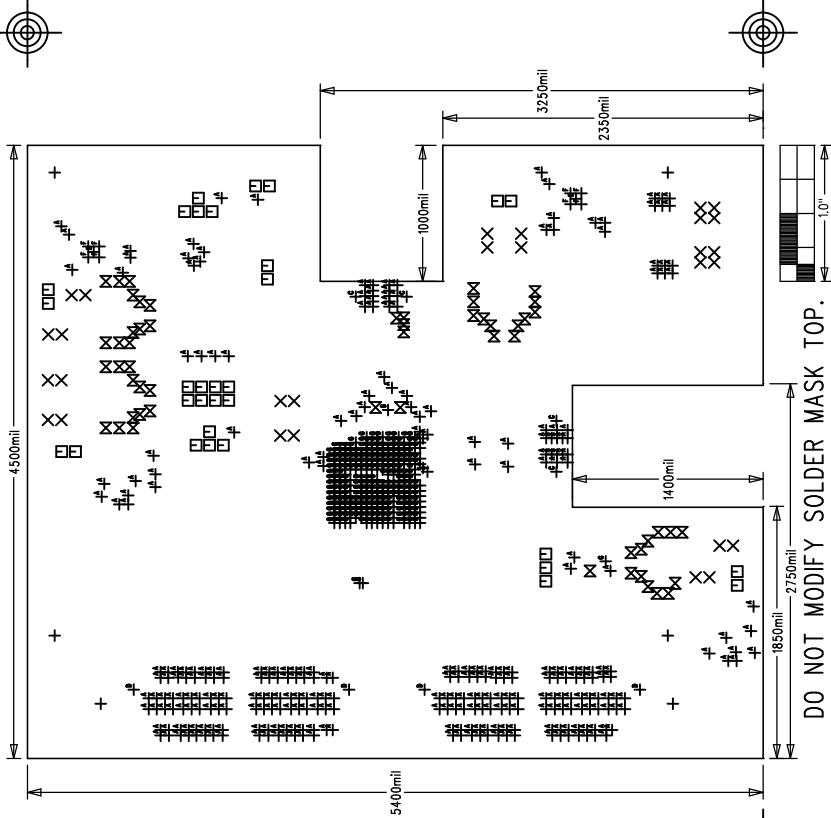


NOTES: UNLESS OTHERWISE SPECIFIED

1. FABRICATE USING PROVIDED GERBER FILES PER LATEST REVISION
2. OF IPC-A-600 UNLESS OTHERWISE NOTED.
3. MATERIAL: RoHS COMPLIANT FR-408 COMPATIBLE WITH LEAD-FREE SOLDERING PROCESS AND ROGERS4003C.
4. BOARD DIMENSIONS: 4.40"x5.40" +/- 0.010".
5. BOARD THICKNESS: 0.094"
6. LAYERS: 12. SEE LAYER STACKUP CHART.
7. MINIMUM TRACE/SPACING: 4 MILS/4MILS +/- 10%.
8. COPPER CLAD FINISH: PLEASE SEE LAYER STACKUP CHART
9. SURFACE MOUNT PADS: 827.
10. SOLDERMASK: GREEN LPI SMOBC, TAIYO PSR-4000.
11. SOLDERMASK APERTURE TOLERANCE: +/-0.0005".
12. LEGENDS: WHITE, DOUBLE-SIDED, NON-CONDUCTIVE EPOXY INK OR EQUIVALENT. CLIPPED ALL LEGENDS FROM EXPOSED METAL.
13. PLATING: MUST BE LEAD FREE AND RoHS COMPLIANT.
14. FINISH: 3-8u" IMMERSON Au OVER 100u" Ni.
15. VENDOR LOGO & DATE CODE: ALLOWED IN INK ON BOTTOM SIDE ONLY.
16. THRU HOLES: 0.001" MIN.
17. TOLERANCES:
 - PLATED-THRU HOLES: +/-0.003"
 - PATTERN-TO-PATTERN: +/-0.005"
 - LEGEND TO LEGEND: +/-0.007"

MAX5879 EVALUATION KIT	
P/N: EPCB5879	REV A
PROPERTY OF INTEGRATED PRODUCTS	
LAYER	DRILL & MECHANICALS
DATE:	ALL UNITS ARE IN 0.001"



SIZE	QTY	SYM	PLATED	THR/PRTL	TOL
125	6	+	YES	THR	+/-3.0
40	28	X	YES	THR	+/-3.0
37	31	□	YES	THR	+/-3.0
25	55	⊠	YES	THR	+/-3.0
15	319	+	YES	THR	+/-3.0
83	4	⊖	YES	THR	+/-3.0
40	4	⊖	NO	THR	+/-3.0
35	2	⊖	YES	THR	+/-3.0
20	8	⊖	YES	THR	+/-3.0
8	247	⊖	YES	THR	+/-3.0

100 OHM DIFFERENTIAL		50 OHM SINGLE-ENDED		25 OHM SINGLE-ENDED	
TRACE WIDTH	TRACE SPACING	TRACE WIDTH	TRACE SPACING	TRACE WIDTH	TRACE SPACING
10	6	10	10	15	30
LAYER 1 TOP	10	10	10	15	30
LAYER 2 GND	10	10	10	15	30
LAYER 3 SIGNAL	4	4	4	N/A	N/A
LAYER 4 GND	4	4	4	N/A	N/A
LAYER 5 SIGNAL	4	4	4	N/A	N/A
LAYER 6 GND	4	4	4	N/A	N/A
LAYER 7 GND	4	4	4	N/A	N/A
LAYER 8 SIGNAL	4	4	4	13	N/A
LAYER 9 GND	4	4	4	13	N/A
LAYER 10 SIGNAL	4	4	4	13	N/A
LAYER 11 GND	4	4	4	13	N/A
LAYER 12 BOTTOM	10	10	10	10	10

ALL DIMENSION IN MIL (0.001 INCH) UNLESS OTHERWISE SPECIFIED.
N/A - NOT AVAILABLE. DO NOT ROUTE TRACES OF THIS TYPE ON THE INDICATE LAYERS.
IMPEDANCE TOLERANCE : +/-10%