

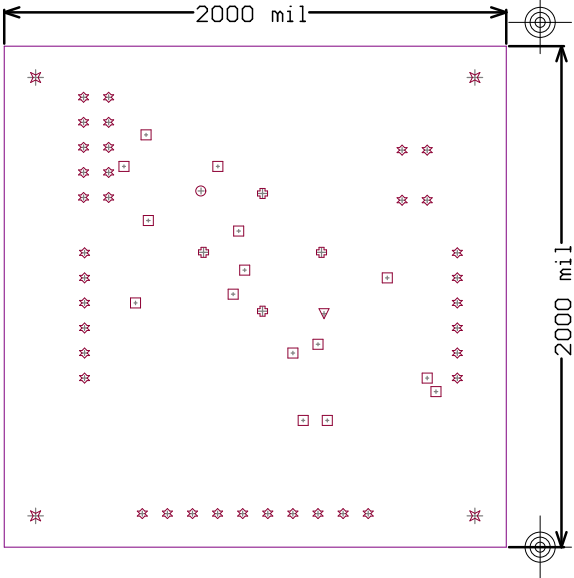
Exposed metal needs 30µin Hard Au over 300µin Ni over 1oz Cu


Hard Gold 30 microns

Nickel 300 microns

Copper 1oz

FR4



DS9121CQ+				
Part Number: 90-28C40#K00				
Property of  maxim integrated™				Rev B
Drill and Mechanical Layer				
Date: JAN 10 2019   Units in mils				
SIZE QTY SYM PLATED TOLERANCE				
13	15	□	YES	+/- 0.003
39	1	▽	NO	+/- 0.003
39	36	✱	YES	+/- 0.003
47	1	⊕	NO	+/- 0.003
67	4	⊗	YES	+/- 0.003
125	4	✱	NO	+/- 0.003

Notes:

1. N/A
2. Material: RoHS Compliant FR-408 or similar laminate material
3. Board Dimensions: (2000 x 2000 mils)
4. Board Thickness: 62 mils +/- 10%
5. Layers: 2 (Top, Bottom)
6. Minimum Trace/Spacing: 10 trace - 5 space
7. Copper Thickness: 1oz on all layers
8. Surface mount pads: 28 Through Hole Pads: 36 Nonplated through holes: 6
9. Soldermask: GREEN
10. Legend: White. top side only
11. Plating: 30 micron hard gold over 300 micron nickel over 1oz copper
12. Finish: Most Economical Lead free and RoHS compliant process
13. Vendor Logo & date code: Allowed on bottom side only
14. Total Drill hole quantity: 61 Slot Holes: 0 Smallest hole size: 13mil
15. Tolerances:

Plated-through holes +/- 3 mil

Pattern to pattern +/- 6 mil

Legend to legend no preference

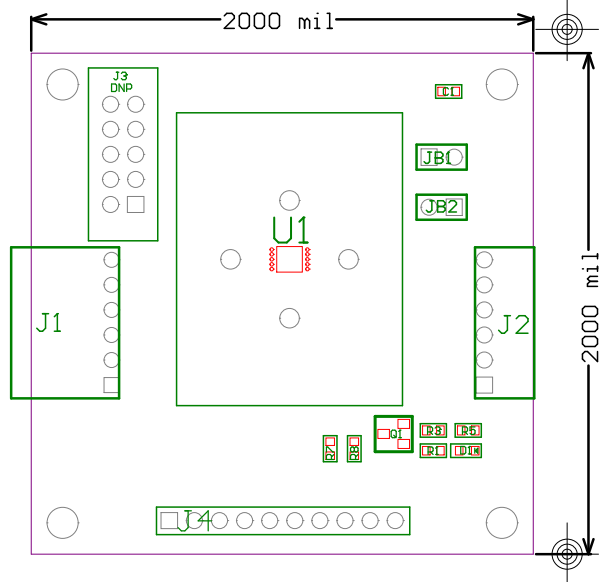
Soldermask to pattern +/- 6 mil
16. Electrical testing needed: YES

62mil PCB

# TOP ASSEMBLY

Exposed metal needs 30µin Hard Au over 300µin Ni over 1oz Cu

Hard Gold 30 microns  
Nickel 300 microns  
Copper 1oz  
FR4



DS9121CQ+	
Part Number: 90-28C40#K00	
Property of	Rev
maxim integrated™	B
Drill and Mechanical Layer	
Date: JAN 10 2019	Units in mils

SIZE	QTY	SYM	PLATED	TOLERANCE
13	15		YES	+/- 0.003
39	1		NO	+/- 0.003
39	36		YES	+/- 0.003
47	1		NO	+/- 0.003
67	4		YES	+/- 0.003
125	4		NO	+/- 0.003

## Notes:

- N/A
- Material: RoHS Compliant FR-408 or similar laminate material
- Board Dimensions: (2000 x 2000 mils)
- Board Thickness: 62 mils +/- 10%
- Layers: 2 (Top, Bottom)
- Minimum Trace/Spacing: 10 trace - 5 space
- Copper Thickness: 1oz on all layers
- Surface mount pads: 28 Through Hole Pads: 36 Nonplated through holes: 6
- Soldermask: GREEN
- Legend: White. top side only
- Plating: 30 micron hard gold over 300 micron nickel over 1oz copper
- Finish: Most Economical Lead free and RoHS compliant process
- Vendor Logo & date code: Allowed on bottom side only
- Total Drill hole quantity: 61 Slot Holes: 0 Smallest hole size: 13mil
- Tolerances:
  - Plated-through holes +/- 3 mil
  - Pattern to pattern +/- 6 mil
  - Legend to legend no preference
  - Soldermask to pattern +/- 6 mil
- Electrical testing needed: YES

62mil PCB

