

Hearables Get Longer Life with SIMO

Introduction

Hearable devices are an emerging market at the intersection of wireless stereo earbuds and fitness monitoring. However, the small form factor escalates the miniaturization challenge for electronics and presents additional challenges for battery life. This article presents an innovative power management system that delivers power with high efficiency in a very small space, while enabling longer battery life for miniaturized hearable devices (Figure 1).

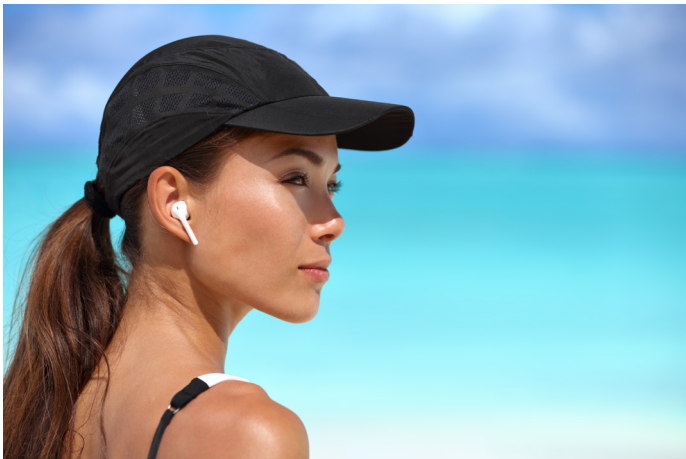


Figure 1. Small Wireless Earbuds Challenge the Size and Battery Life of Electronics

Typical Power Management Implementation

A typical hearable power management system is shown in Figure 2. A power management IC (PMIC) uses a battery charger, a buck converter, and an LDO to power the sensors. A second IC, a dual LDO, powers the microcontroller, Bluetooth®, and audio. For simplicity, the external passives are not shown.

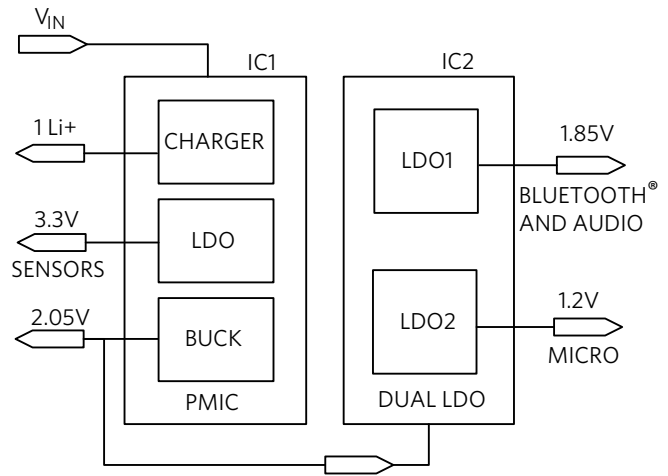


Figure 2. Typical Hearable Power Flow Diagram

The Typical Power Tree

The complete power tree for a typical implementation is shown in Figure 3. The heavy use of LDOs results in an overall efficiency of only 69.5%.

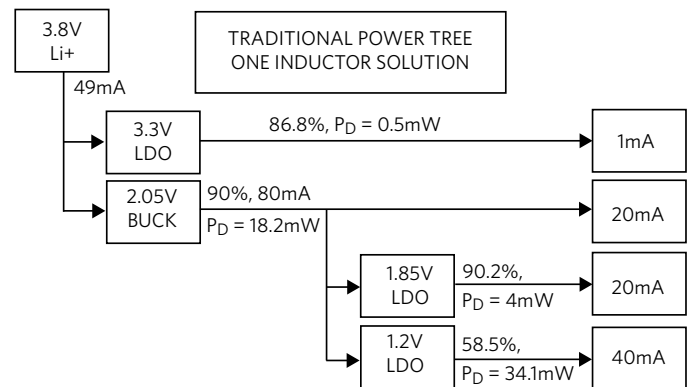


Figure 3. Typical Hearable Power Flow Diagram

Typical Solution Size

All of the active and passive components of the power flow diagram in Figure 2 are included in the solution shown in Figure 4.

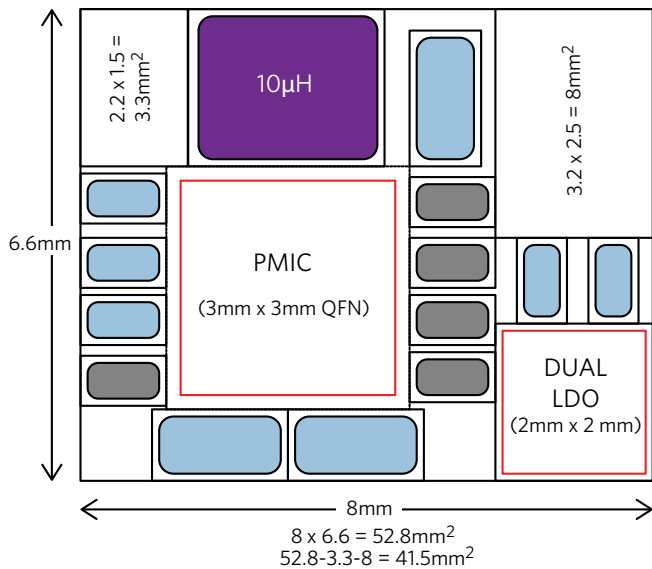


Figure 4. Typical Hearable Solution (41.5mm²)

This typical hearable solution occupies a PCB area of about 41.5mm². The relatively low level of integration as well as the use of multiple LDOs and bigger passives results in a solution that is inefficient in terms of both space and power.

An Innovative Solution

The power management IC in Figure 5 (MAX77650) integrates the battery charger and regulation needed to power the sensor (3.3V), the microcontroller (1.2V), the Bluetooth, and audio (1.85V), all in one chip. The small PMIC eliminates the wasted space associated with using multiple packages. A single-inductor multiple-output (SIMO) buck-boost regulator implements three switching regulators that utilize a single inductor, which reduces the necessary space. In addition, high-frequency operation allows the use of a small inductor, further minimizing the required space. One LDO is on-board for noise-sensitive loads. For simplicity, the external passives are not shown.

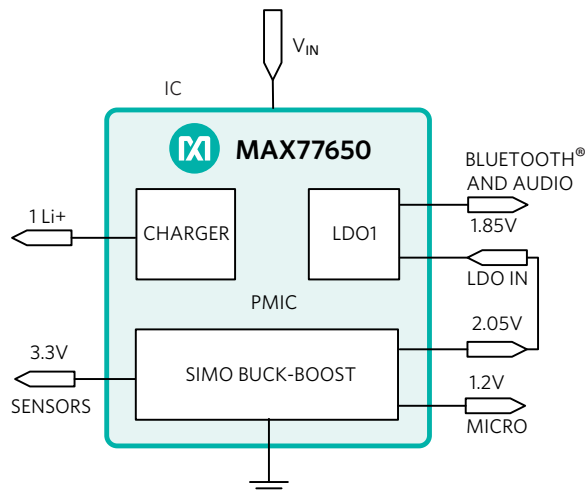


Figure 5. MAX77650 Highly Integrated PMIC

The MAX77650 Power Tree

Figure 6 shows the PMIC power tree with each regulator's output voltage, load current, efficiency and power dissipation (PD). Three of the four loads connect to the Li+ battery via a high-efficiency SIMO switching regulator. The fourth load is powered by the LDO from the 2.05V SIMO output, which achieves 90.2% efficiency (1.85V/2.05V). The overall system efficiency is an outstanding 78.4%.

A comparison between the power performance for both solutions is shown in Table 1.

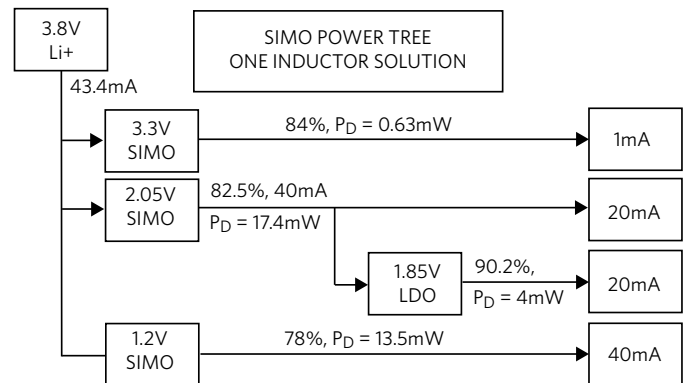


Figure 6. MAX77650 Power Tree

Parameter	Traditional Solution	SIMO	SIMO Advantage
Li+ Battery Current	49mA	43.4mA	SIMO saves 5.6mA
System Efficiency	69.5%	78.4%	SIMO is 8.9% more efficient
Minimum Li+ Battery Voltage	3.4V due to 3.4V LDO	2.7V	SIMO allows more discharge

Table 1. SIMO Advantage vs. Traditional Solution

The superior efficiency of the SIMO solution results in significantly lower battery drain, while its wider operating range, down to 2.7V, prolongs the untethered operation of hearable devices.

The SIMO Converter

Figure 7 shows the block diagram of the SIMO converter (all components, except the inductor, are integrated). The beauty of this architecture resides in its ability to incorporate three switching regulators that utilize a single inductor. The switching regulators deliver power with minimum losses and the clever architecture eliminates the need to have one inductor for each switching regulator.

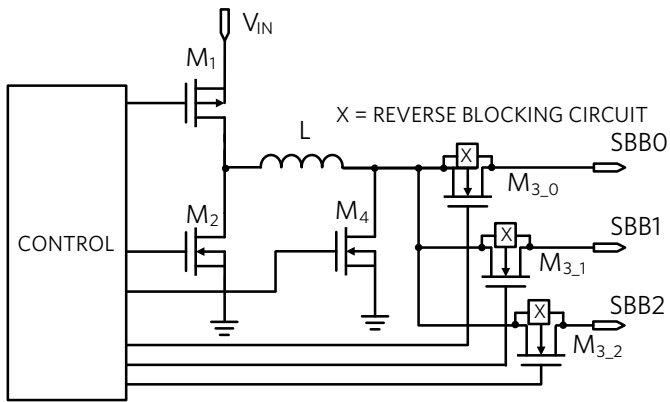


Figure 7. SIMO Power Block Diagram

Inductor Current Sharing

In hysteretic, discontinuous current-control mode, the inductor builds up current with M1 and M4 "on" at the rate of V_{IN}/L . When it reaches a set limit, the current is delivered to the selected output via the M2 and M3_x transistors, as shown in Figure 8. Outputs are serviced in the order requested by their output comparators.

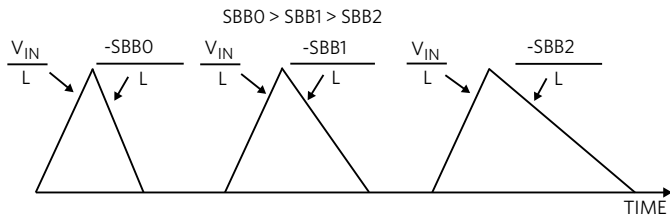


Figure 8. SIMO Current Waveforms

Buck-Boost Architecture Advantage

One of the main features that differentiates a hearable device from a standard stereo Bluetooth headset is the integration of one or more optical or inertial MEMS sensors. The optical sensors use the reflection from an integrated LED to measure blood oxygen saturation, pulse rate, or other vital signs. To generate sufficient light intensity, the LEDs need to run at a higher range of voltage (4V to 5V) than the typical range of Li+ batteries. Designers have a difficult choice: add a buck-boost to the system, which requires yet another IC; add another inductor and more capacitors, which takes up valuable space and volume; or sacrifice the signal-to-noise ratio and risk inaccurate measurements and a poor user experience. The SIMO buck-boost architecture solves this problem by using any one of the outputs set to the desired voltage (up to 5.5V) to drive the LED and optimize sensor performance.

More Battery Life in a Smaller Space

Thanks to its SIMO switching regulators and its efficiently biased LDO, the small MAX77650 PMIC (a 2.75mm x 2.15mm x 0.8mm WLP) delivers power with minimum losses in a PCB space that is less than half of a typical implementation. The solution layout in Figure 9 accounts for all active and passive components.

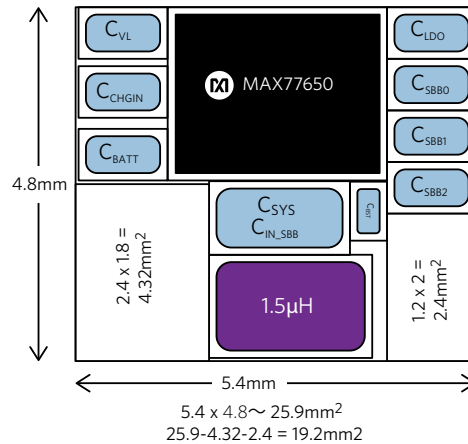


Figure 9. MAX77650 Solution (19.2mm²)

The total occupied board space is a mere 19.2mm². In addition, the MAX77650 draws only 300nA in standby mode and 5.6µA in active mode. This saves valuable battery life and again helps reduce the system size by allowing the use of the smallest battery possible while prolonging the use time between each charge.

- Buck:** Step-down switching regulator
- LED:** Light-emitting diode
- Li+:** Lithium-ion battery
- MEMS:** Microelectromechanical systems
- PMIC:** Power management integrated circuit
- SIMO:** Single-inductor multiple-output voltage regulator

More Options

A similar device, the [MAX77651](#), supports applications that require a higher output voltage range. Table 2 summarizes the output voltage ranges and currents for the MAX77650 and MAX77651.

REGULATOR NAME	REGULATOR TOPOLOGY	MAXIMUM I _{OUT} (mA)	V _{IN} RANGE (V)	MAX77650 V _{OUT} RANGE/RESOLUTION	MAX77651 V _{OUT} RANGE/RESOLUTION
SBBO	SIMO	Up to 300*	2.7 to 5.5	0.8V to 2.375V in 25mV steps	0.8V to 2.375V in 25mV steps
SBB1	SIMO	Up to 300*	2.7 to 5.5	0.8V to 1.5875 in 12.5mV steps	2.4 to 5.25V in 50mV steps
SBB2	SIMO	Up to 300*	2.7 to 5.5	0.8V to 3.95V in 50mV steps	2.4 to 5.25V in 50mV steps
LDO	PMOS LDO	150	1.8 to 5.5	1.35V to 2.9375V in 12.5mV steps	1.35V to 2.9375V in 12.5mV steps

*Shared capacity with other SBBx channels

Table 2. MAX77650 and MAX77651 Output Voltages and Currents

Conclusion

We reviewed a typical hearable solution with a low level of integration that leads to inefficiencies in terms of both PCB space and power consumption. Thanks to a unique SIMO architecture, the MAX77650 and MAX77651 PMICs efficiently deliver more power in a smaller space, enabling longer battery life and smaller form factors for hearable devices.

Learn more:

[MAX77650 Ultra-Low Power PMIC with 3-Output SIMO and Charger Optimized for Small Li+ Batteries](#)

[MAX77651 Ultra-Low Power PMIC with Adjustable 3-Output SIMO and Charger Optimized for Small Li+](#)

Design Solutions No. 26

Rev 0; October 2017

Need Design Support?
Call 888 MAXIM-IC (888 629-4642)

[Find More Design Solutions](#)

Maxim Integrated
160 Rio Robles
San Jose, CA 95134 USA
408-601-1000

maximintegrated.com/design-solutions

